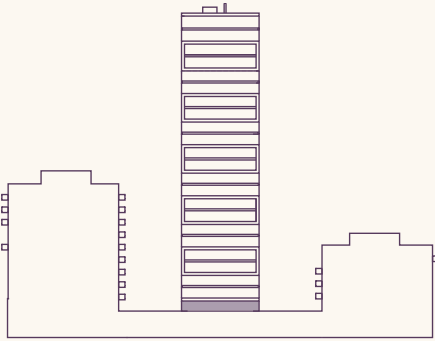


FLOOR 1

APARTMENTS
1-8

CODA : FLOORPLANS



01
TYPE 01 2 BEDROOM

NIA	69.64 m ²	750 ft ²
LIVING/KITCHEN	4.07 x 6.23 m	13' 4" x 20' 5"
BEDROOM 1	3.77 x 3.31 m	12' 4" x 10' 10"
BEDROOM 2	3.42 x 3.09 m	11' 2" x 10' 2"
BALCONY	9.70 x 3.90 m	31' 11" x 12' 9"

02
TYPE 02 2 BEDROOM

NIA	72.64 m ²	782 ft ²
LIVING/KITCHEN	4.47 x 5.46 m	14' 8" x 17' 11"
BEDROOM 1	3.84 x 4.10 m	12' 7" x 13' 6"
BEDROOM 2	2.73 x 3.09 m	8' 11" x 10' 2"
BALCONY	9.70 x 3.90 m	31' 11" x 12' 9"

03
TYPE 03 STUDIO

NIA	41.36 m ²	445 ft ²
LIVING/KITCHEN	3.46 x 4.54 m	11' 4" x 14' 11"
BEDROOM	3.31 x 2.75 m	10' 10" x 9' 0"
BALCONY	1.57 x 3.30 m	5' 2" x 10' 10"

04
TYPE 04 2 BEDROOM

NIA	73.23 m ²	788 ft ²
LIVING/KITCHEN	6.72 x 4.39 m	22' 1" x 14' 5"
BEDROOM 1	4.47 x 3.17 m	14' 8" x 10' 5"
BEDROOM 2	4.84 x 2.75 m	15' 10" x 9' 0"
BALCONY	1.57 x 4.70 m	5' 2" x 15' 3"

05
TYPE 05 2 BEDROOM

NIA	73.44 m ²	791 ft ²
LIVING/KITCHEN	3.84 x 4.92 m	12' 7" x 16' 2"
BEDROOM 1	3.91 x 3.13 m	12' 10" x 10' 3"
BEDROOM 2	4.99 x 2.75 m	16' 4" x 9' 0"
BALCONY	9.70 x 2.40 m	31' 11" x 7' 10"

06
TYPE 06 2 BEDROOM

NIA	69.97 m ²	753 ft ²
LIVING	3.38 x 2.84 m	11' 1" x 9' 4"
KITCHEN	5.42 x 2.08 m	17' 10" x 6' 10"
BEDROOM 1	3.93 x 3.31 m	12' 11" x 10' 10"
BEDROOM 2	4.14 x 2.75 m	13' 7" x 9' 0"
BALCONY	9.70 x 2.40 m	31' 11" x 7' 10"

07
TYPE 07 2 BEDROOM

NIA	68.36 m ²	736 ft ²
LIVING	6.26 x 2.55 m	20' 6" x 8' 4"
KITCHEN	4.60 x 1.85 m	15' 1" x 6' 1"
BEDROOM 1	4.01 x 3.17 m	13' 2" x 10' 5"
BEDROOM 2	4.37 x 2.75 m	14' 4" x 9' 0"
BALCONY	1.57 x 4.70 m	5' 2" x 15' 3"

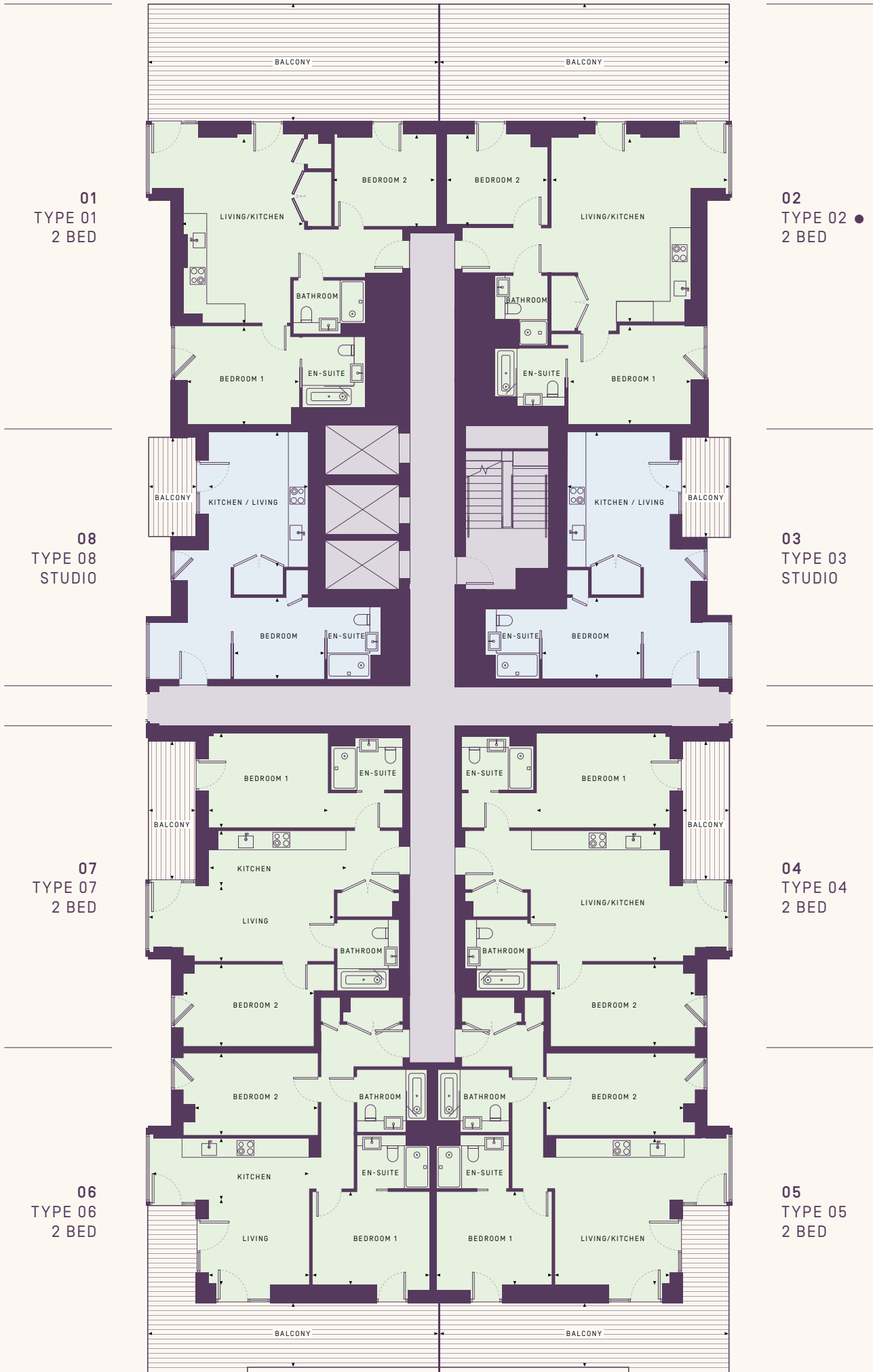
08
TYPE 08 STUDIO

NIA	39.63 m ²	427 ft ²
LIVING/KITCHEN	3.33 x 4.53 m	10' 11" x 14' 10"
BEDROOM	3.05 x 2.74 m	10' 0" x 9' 0"
BALCONY	1.60 x 3.30 m	5' 2" x 10' 10"

● WHEELCHAIR ADAPTABLE UNITS

- STUDIO
- 2 BEDROOM

Floorplans are for approximate measurements only. Exact layouts and sizes may vary. All measurements may vary within a tolerance of 5%. The dimensions are not intended to be used for carpet sizes, appliances or items of furniture.



01
TYPE 01
2 BED

02
TYPE 02
2 BED

08
TYPE 08
STUDIO

03
TYPE 03
STUDIO

07
TYPE 07
2 BED

04
TYPE 04
2 BED

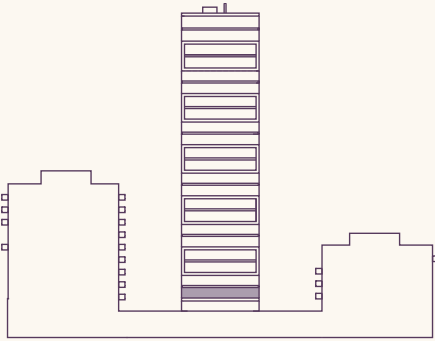
06
TYPE 06
2 BED

05
TYPE 05
2 BED

FLOORS 2

APARTMENTS
9 - 16

CODA : FLOORPLANS



09
TYPE 01 2 BEDROOM

NIA	69.64 m ²	750 ft ²
LIVING/KITCHEN	4.07 x 6.23 m	13' 4" x 20' 5"
BEDROOM 1	3.77 x 3.31 m	12' 4" x 10' 10"
BEDROOM 2	3.42 x 3.09 m	11' 2" x 10' 2"
BALCONY	5.00 x 1.60 m	16' 7" x 5' 2"

10
TYPE 02 2 BEDROOM

NIA	72.64 m ²	782 ft ²
LIVING/KITCHEN	4.47 x 5.46 m	19' 1" x 21' 1"
BEDROOM 1	3.84 x 4.10 m	13' 5" x 10' 1"
BEDROOM 2	2.73 x 3.09 m	11' 2" x 9' 8"
BALCONY	5.00 x 1.60 m	16' 7" x 5' 2"

11
TYPE 09 1 BEDROOM

NIA	54.57 m ²	587 ft ²
LIVING	4.38 x 3.54 m	14' 4" x 11' 8"
KITCHEN	4.64 x 2.99 m	15' 3" x 9' 10"
BEDROOM	3.46 x 3.40 m	11' 4" x 11' 2"
BALCONY	1.56 x 3.30 m	5' 2" x 10' 10"

12
TYPE 04 2 BEDROOM

NIA	73.23 m ²	788 ft ²
LIVING/KITCHEN	6.72 x 4.39 m	22' 1" x 14' 5"
BEDROOM 1	4.47 x 3.17 m	14' 8" x 10' 5"
BEDROOM 2	4.84 x 2.75 m	15' 10" x 9' 00"
BALCONY	1.60 x 4.70 m	5' 2" x 15' 3"

13
TYPE 05 2 BEDROOM

NIA	73.44 m ²	791 ft ²
LIVING/KITCHEN	3.84 x 4.92 m	12' 7" x 16' 2"
BEDROOM 1	3.91 x 3.13 m	12' 10" x 10' 3"
BEDROOM 2	4.99 x 2.75 m	16' 4" x 9' 00"
BALCONY	5.00 x 1.60 m	16' 7" x 5' 2"

14
TYPE 06 2 BEDROOM

NIA	69.97 m ²	753 ft ²
LIVING	3.38 x 2.84 m	11' 1" x 9' 4"
KITCHEN	5.42 x 2.08 m	17' 10" x 6' 10"
BEDROOM 1	3.93 x 3.31 m	12' 11" x 10' 10"
BEDROOM 2	4.14 x 2.75 m	13' 7" x 9' 0"
BALCONY	5.00 x 1.60 m	16' 7" x 5' 2"

15
TYPE 07 2 BEDROOM

NIA	68.36 m ²	736 ft ²
LIVING	6.26 x 2.55 m	20' 6" x 8' 4"
KITCHEN	4.60 x 1.85 m	15' 1" x 6' 1"
BEDROOM 1	4.01 x 3.17 m	13' 2" x 10' 5"
BEDROOM 2	4.37 x 2.75 m	14' 4" x 9' 0"
BALCONY	1.57 x 4.70 m	5' 2" x 15' 3"

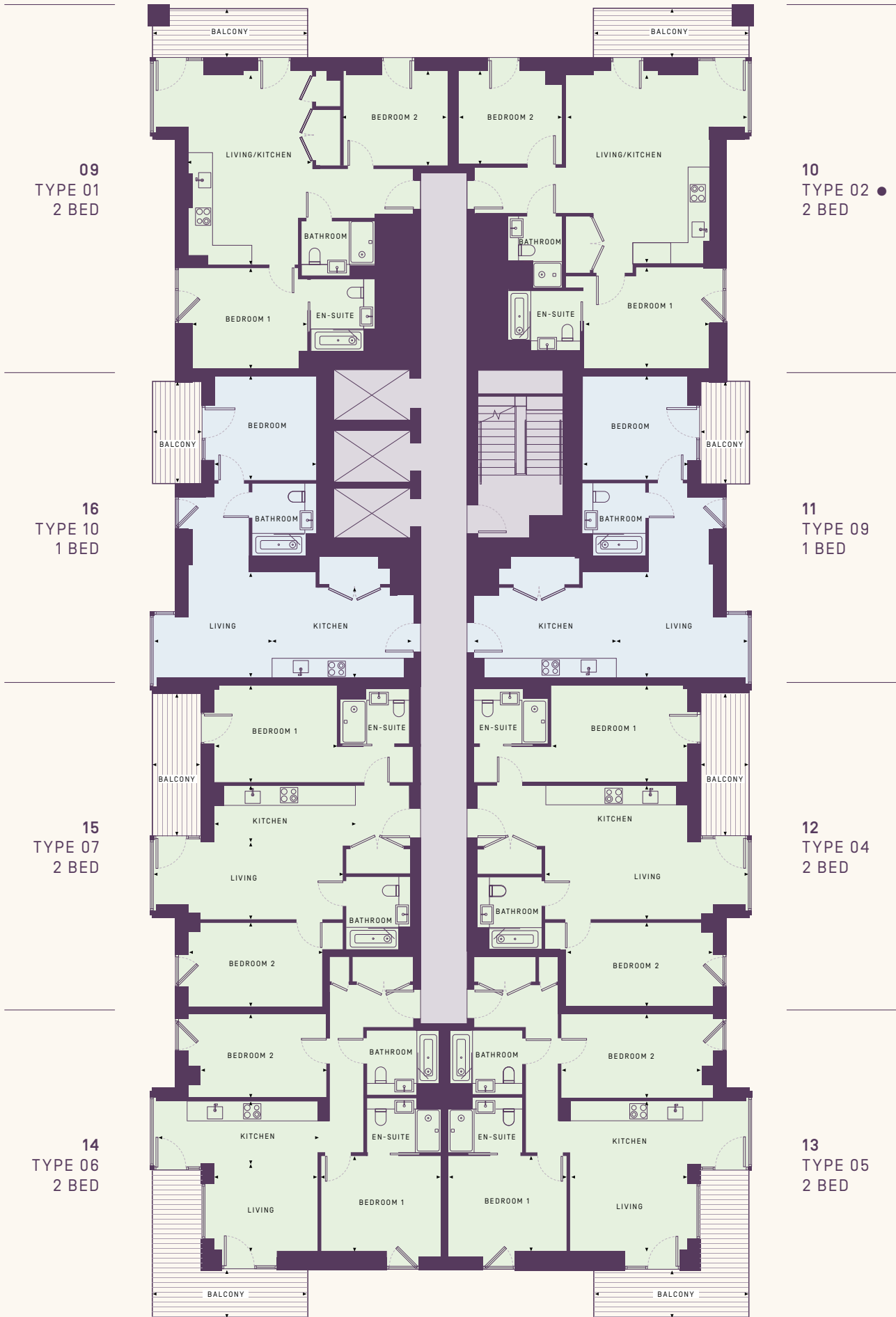
16
TYPE 10 1 BEDROOM

NIA	52.02 m ²	560 ft ²
LIVING	3.94 x 3.54 m	12' 11" x 11' 7"
KITCHEN	4.30 x 2.99 m	14' 1" x 9' 10"
BEDROOM	3.33 x 3.40 m	10' 11" x 11' 2"
BALCONY	1.56 x 3.30 m	5' 2" x 10' 10"

● WHEELCHAIR ADAPTABLE UNITS

- 1 BEDROOM
- 2 BEDROOM

Floorplans are for approximate measurements only. Exact layouts and sizes may vary. All measurements may vary within a tolerance of 5%. The dimensions are not intended to be used for carpet sizes, appliances or items of furniture.



09
TYPE 01
2 BED

10
TYPE 02 ●
2 BED

16
TYPE 10
1 BED

11
TYPE 09
1 BED

15
TYPE 07
2 BED

12
TYPE 04
2 BED

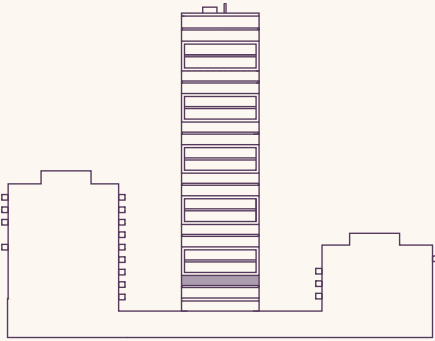
14
TYPE 06
2 BED

13
TYPE 05
2 BED

FLOORS 3

APARTMENTS
17 - 24

CODA : FLOORPLANS



17			
TYPE 01		2 BEDROOM	
NIA	69.64 m²	750 ft²	
LIVING/KITCHEN	4.07 x 6.23 m	13' 4" x 20' 5"	
BEDROOM 1	3.77 x 3.31 m	12' 4" x 10' 10"	
BEDROOM 2	3.42 x 3.09 m	11' 2" x 10' 2"	
BALCONY	5.00 x 1.60 m	16' 7" x 5' 2"	

18			
TYPE 02		2 BEDROOM	
NIA	72.64 m²	782 ft²	
LIVING/KITCHEN	4.47 x 5.46 m	19' 1" x 21' 1"	
BEDROOM 1	3.84 x 4.10 m	13' 5" x 10' 1"	
BEDROOM 2	2.73 x 3.09 m	11' 2" x 9' 8"	
BALCONY	5.00 x 1.60 m	16' 7" x 5' 2"	

19			
TYPE 09		1 BEDROOM	
NIA	54.57 m²	587 ft²	
LIVING	4.38 x 3.54 m	14' 4" x 11' 8"	
KITCHEN	4.64 x 2.99 m	15' 3" x 9' 10"	
BEDROOM	3.46 x 3.40 m	11' 4" x 11' 2"	
BALCONY	1.56 x 3.30 m	5' 2" x 10' 10"	

20			
TYPE 04		2 BEDROOM	
NIA	73.23 m²	788 ft²	
LIVING/KITCHEN	6.72 x 4.39 m	22' 1" x 14' 5"	
BEDROOM 1	4.47 x 3.17 m	14' 8" x 10' 5"	
BEDROOM 2	4.84 x 2.75 m	15' 10" x 9' 00"	
BALCONY	1.60 x 4.70 m	5' 2" x 15' 3"	

21			
TYPE 05		2 BEDROOM	
NIA	73.44 m²	791 ft²	
LIVING/KITCHEN	3.84 x 4.92 m	12' 7" x 16' 2"	
BEDROOM 1	3.91 x 3.13 m	12' 10" x 10' 3"	
BEDROOM 2	4.99 x 2.75 m	16' 4" x 9' 00"	
BALCONY	9.70 x 1.60 m	31' 11" x 5' 2"	

22			
TYPE 06		2 BEDROOM	
NIA	69.97 m²	753 ft²	
LIVING	3.38 x 2.84 m	11' 1" x 9' 4"	
KITCHEN	5.42 x 2.08 m	17' 10" x 6' 10"	
BEDROOM 1	3.93 x 3.31 m	12' 11" x 10' 10"	
BEDROOM 2	4.14 x 2.75 m	13' 7" x 9' 0"	
BALCONY	9.70 x 1.60 m	31' 11" x 5' 2"	

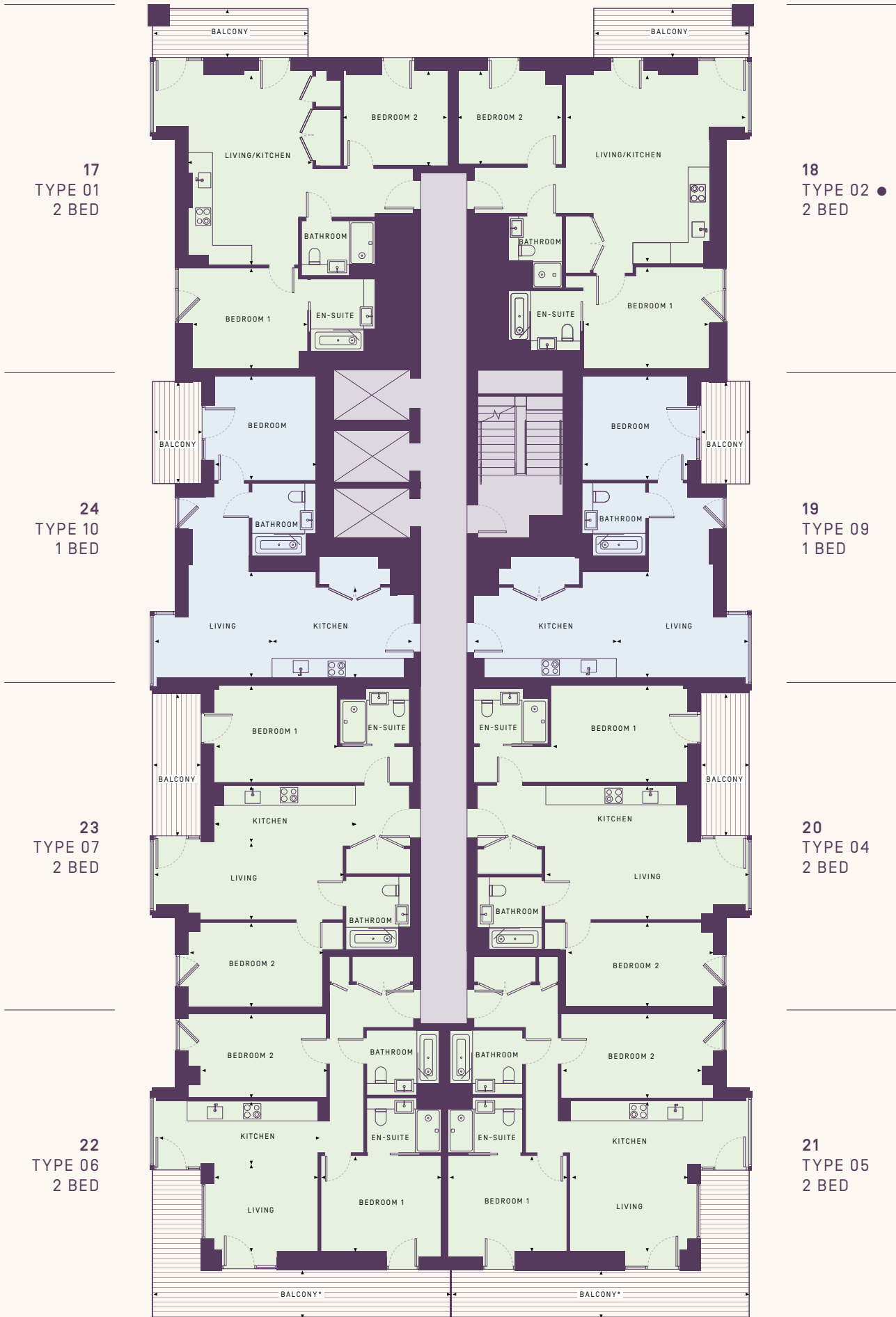
23			
TYPE 07		2 BEDROOM	
NIA	68.36 m²	736 ft²	
LIVING	6.26 x 2.55 m	20' 6" x 8' 4"	
KITCHEN	4.60 x 1.85 m	15' 1" x 6' 1"	
BEDROOM 1	4.01 x 3.17 m	13' 2" x 10' 5"	
BEDROOM 2	4.37 x 2.75 m	14' 4" x 9' 0"	
BALCONY	1.57 x 4.70 m	5' 2" x 15' 3"	

24			
TYPE 10		1 BEDROOM	
NIA	52.02 m²	560 ft²	
LIVING	3.94 x 3.54 m	12' 11" x 11' 7"	
KITCHEN	4.30 x 2.99 m	14' 1" x 9' 10"	
BEDROOM	3.33 x 3.40 m	10' 11" x 11' 2"	
BALCONY	1.56 x 3.30 m	5' 2" x 10' 10"	

● WHEELCHAIR ADAPTABLE UNITS

- 1 BEDROOM
- 2 BEDROOM

Floorplans are for approximate measurements only. Exact layouts and sizes may vary. All measurements may vary within a tolerance of 5%. The dimensions are not intended to be used for carpet sizes, appliances or items of furniture.



17
TYPE 01
2 BED

18
TYPE 02 ●
2 BED

24
TYPE 10
1 BED

19
TYPE 09
1 BED

23
TYPE 07
2 BED

20
TYPE 04
2 BED

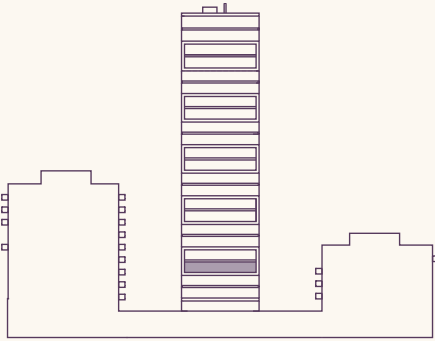
22
TYPE 06
2 BED

21
TYPE 05
2 BED

FLOORS 4

APARTMENTS
25 - 32

CODA : FLOORPLANS



25 TYPE 01 2 BEDROOM

NIA	69.64 m ²	750 ft ²
LIVING/KITCHEN	4.07 x 6.23 m	13' 4" x 20' 5"
BEDROOM 1	3.77 x 3.31 m	12' 4" x 10' 10"
BEDROOM 2	3.42 x 3.09 m	11' 2" x 10' 2"
BALCONY	5.00 x 1.60 m	16' 7" x 5' 2"

26 TYPE 02 2 BEDROOM

NIA	72.64 m ²	782 ft ²
LIVING/KITCHEN	4.47 x 5.46 m	19' 1" x 21' 1"
BEDROOM 1	3.84 x 4.10 m	13' 5" x 10' 1"
BEDROOM 2	2.73 x 3.09 m	11' 2" x 9' 8"
BALCONY	5.00 x 1.60 m	16' 7" x 5' 2"

27 TYPE 09 1 BEDROOM

NIA	54.57 m ²	587 ft ²
LIVING	4.38 x 3.54 m	14' 4" x 11' 8"
KITCHEN	4.64 x 2.99 m	15' 3" x 9' 10"
BEDROOM	3.46 x 3.40 m	11' 4" x 11' 2"
BALCONY	1.56 x 3.30 m	5' 2" x 10' 10"

28 TYPE 04 2 BEDROOM

NIA	73.23 m ²	788 ft ²
LIVING/KITCHEN	6.72 x 4.39 m	22' 1" x 14' 5"
BEDROOM 1	4.47 x 3.17 m	14' 8" x 10' 5"
BEDROOM 2	4.84 x 2.75 m	15' 10" x 9' 00"
BALCONY	1.60 x 4.70 m	5' 2" x 15' 3"

29 TYPE 05 2 BEDROOM

NIA	73.44 m ²	791 ft ²
LIVING/KITCHEN	3.84 x 4.92 m	12' 7" x 16' 2"
BEDROOM 1	3.91 x 3.13 m	12' 10" x 10' 3"
BEDROOM 2	4.99 x 2.75 m	16' 4" x 9' 00"
BALCONY	5.00 x 1.60 m	16' 7" x 5' 2"

30 TYPE 06 2 BEDROOM

NIA	69.97 m ²	753 ft ²
LIVING	3.38 x 2.84 m	11' 1" x 9' 4"
KITCHEN	5.42 x 2.08 m	17' 10" x 6' 10"
BEDROOM 1	3.93 x 3.31 m	12' 11" x 10' 10"
BEDROOM 2	4.14 x 2.75 m	13' 7" x 9' 0"
BALCONY	5.00 x 1.60 m	16' 7" x 5' 2"

31 TYPE 07 2 BEDROOM

NIA	68.36 m ²	736 ft ²
LIVING	6.26 x 2.55 m	20' 6" x 8' 4"
KITCHEN	4.60 x 1.85 m	15' 1" x 6' 1"
BEDROOM 1	4.01 x 3.17 m	13' 2" x 10' 5"
BEDROOM 2	4.37 x 2.75 m	14' 4" x 9' 0"
BALCONY	1.57 x 4.70 m	5' 2" x 15' 3"

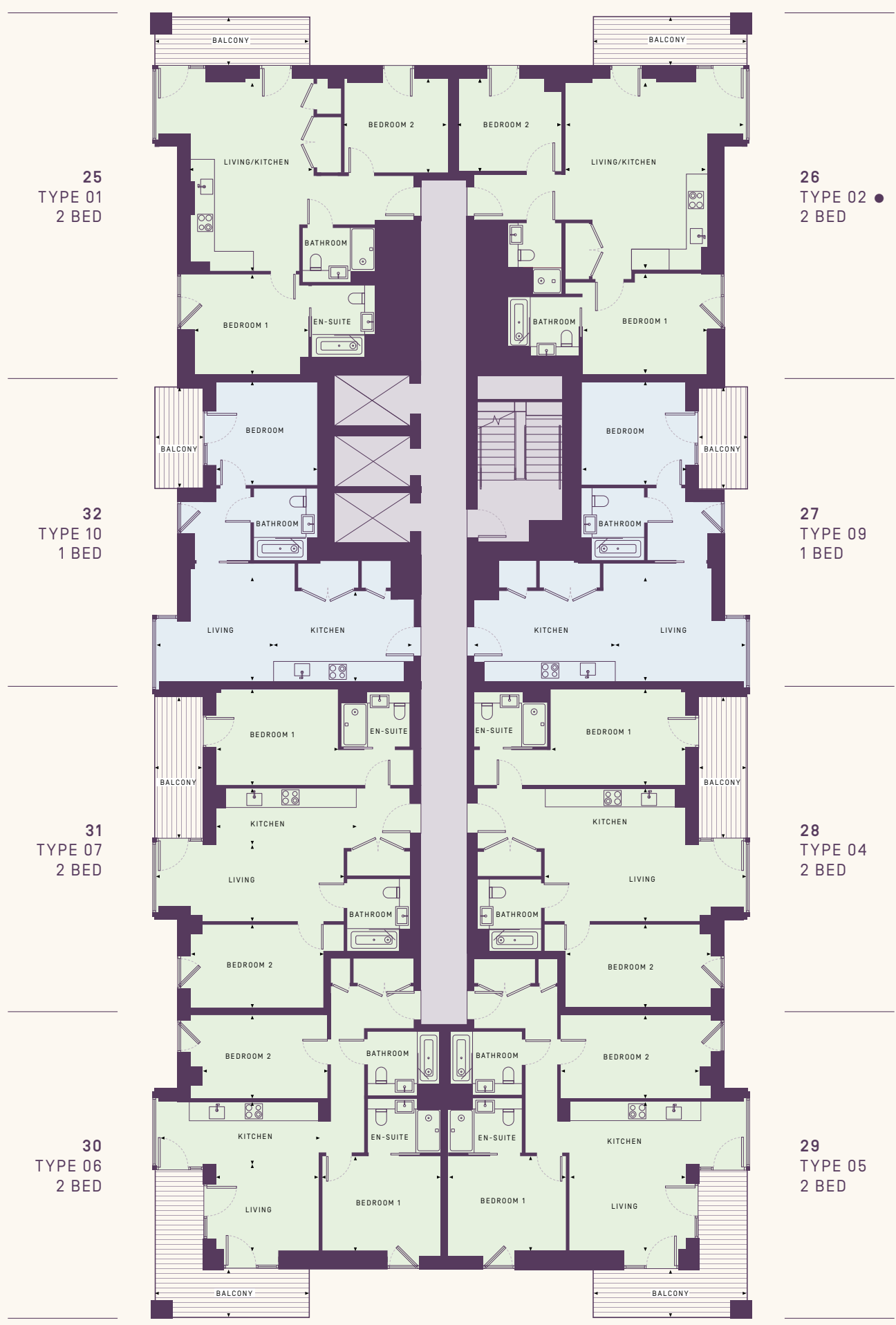
32 TYPE 10 1 BEDROOM

NIA	52.02 m ²	560 ft ²
LIVING	3.94 x 3.54 m	12' 11" x 11' 7"
KITCHEN	4.30 x 2.99 m	14' 1" x 9' 10"
BEDROOM	3.33 x 3.40 m	10' 11" x 11' 2"
BALCONY	1.56 x 3.30 m	5' 2" x 10' 10"

● WHEELCHAIR ADAPTABLE UNITS

- 1 BEDROOM
- 2 BEDROOM

Floorplans are for approximate measurements only. Exact layouts and sizes may vary. All measurements may vary within a tolerance of 5%. The dimensions are not intended to be used for carpet sizes, appliances or items of furniture.



25
TYPE 01
2 BED

26
TYPE 02 ●
2 BED

32
TYPE 10
1 BED

27
TYPE 09
1 BED

31
TYPE 07
2 BED

28
TYPE 04
2 BED

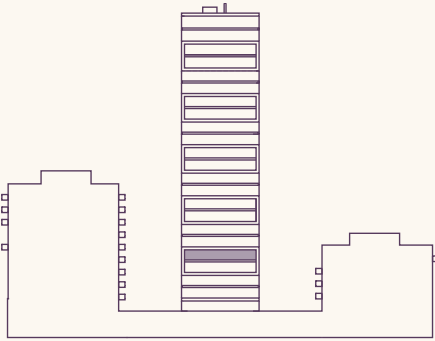
30
TYPE 06
2 BED

29
TYPE 05
2 BED

FLOORS 5

APARTMENTS
9 - 40

CODA : FLOORPLANS



33 TYPE 01 2 BEDROOM

NIA	69.64 m ²	750 ft ²
LIVING/KITCHEN	4.07 x 6.23 m	13' 4" x 20' 5"
BEDROOM 1	3.77 x 3.31 m	12' 4" x 10' 10"
BEDROOM 2	3.42 x 3.09 m	11' 2" x 10' 2"
BALCONY	5.00 x 1.60 m	16' 7" x 5' 2"

34 TYPE 02 2 BEDROOM

NIA	72.64 m ²	782 ft ²
LIVING/KITCHEN	4.47 x 5.46 m	19' 1" x 21' 1"
BEDROOM 1	3.84 x 4.10 m	13' 5" x 10' 1"
BEDROOM 2	2.73 x 3.09 m	11' 2" x 9' 8"
BALCONY	5.00 x 1.60 m	16' 7" x 5' 2"

35 TYPE 09 1 BEDROOM

NIA	54.57 m ²	587 ft ²
LIVING	4.38 x 3.54 m	14' 4" x 11' 8"
KITCHEN	4.64 x 2.99 m	15' 3" x 9' 10"
BEDROOM	3.46 x 3.40 m	11' 4" x 11' 2"
BALCONY	1.56 x 3.30 m	5' 2" x 10' 10"

36 TYPE 04 2 BEDROOM

NIA	73.23 m ²	788 ft ²
LIVING/KITCHEN	6.72 x 4.39 m	22' 1" x 14' 5"
BEDROOM 1	4.47 x 3.17 m	14' 8" x 10' 5"
BEDROOM 2	4.84 x 2.75 m	15' 10" x 9' 00"
BALCONY	1.60 x 4.70 m	5' 2" x 15' 3"

37 TYPE 05 2 BEDROOM

NIA	73.44 m ²	791 ft ²
LIVING/KITCHEN	3.84 x 4.92 m	12' 7" x 16' 2"
BEDROOM 1	3.91 x 3.13 m	12' 10" x 10' 3"
BEDROOM 2	4.99 x 2.75 m	16' 4" x 9' 00"
BALCONY	5.00 x 1.60 m	16' 7" x 5' 2"

38 TYPE 06 2 BEDROOM

NIA	69.97 m ²	753 ft ²
LIVING	3.38 x 2.84 m	11' 1" x 9' 4"
KITCHEN	5.42 x 2.08 m	17' 10" x 6' 10"
BEDROOM 1	3.93 x 3.31 m	12' 11" x 10' 10"
BEDROOM 2	4.14 x 2.75 m	13' 7" x 9' 0"
BALCONY	5.00 x 1.60 m	16' 7" x 5' 2"

39 TYPE 07 2 BEDROOM

NIA	68.36 m ²	736 ft ²
LIVING	6.26 x 2.55 m	20' 6" x 8' 4"
KITCHEN	4.60 x 1.85 m	15' 1" x 6' 1"
BEDROOM 1	4.01 x 3.17 m	13' 2" x 10' 5"
BEDROOM 2	4.37 x 2.75 m	14' 4" x 9' 0"
BALCONY	1.57 x 4.70 m	5' 2" x 15' 3"

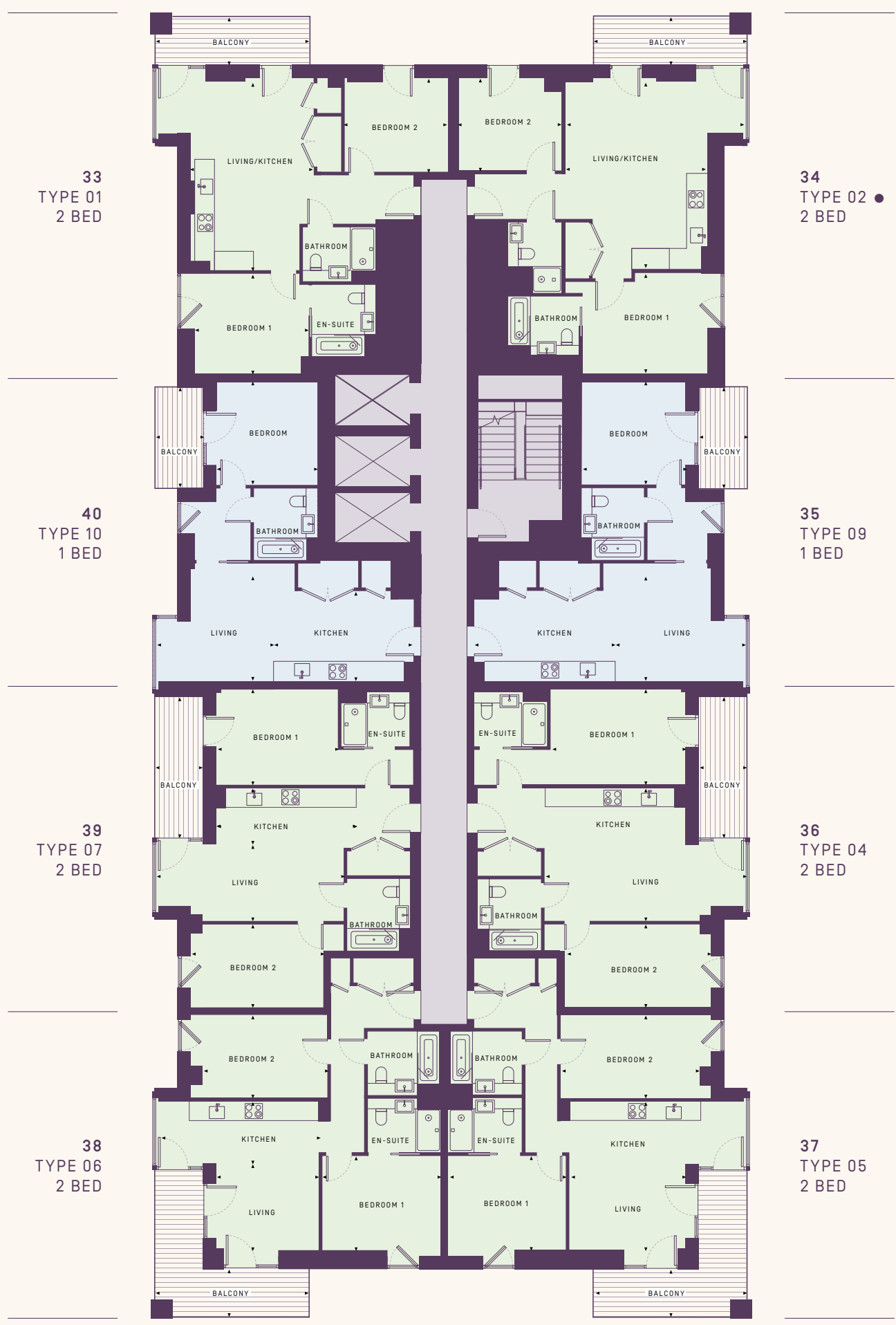
40 TYPE 10 1 BEDROOM

NIA	52.02 m ²	560 ft ²
LIVING	3.94 x 3.54 m	12' 11" x 11' 7"
KITCHEN	4.30 x 2.99 m	14' 1" x 9' 10"
BEDROOM	3.33 x 3.40 m	10' 11" x 11' 2"
BALCONY	1.56 x 3.30 m	5' 2" x 10' 10"

● WHEELCHAIR ADAPTABLE UNITS

- 1 BEDROOM
- 2 BEDROOM

Floorplans are for approximate measurements only. Exact layouts and sizes may vary. All measurements may vary within a tolerance of 5%. The dimensions are not intended to be used for carpet sizes, appliances or items of furniture.



33
TYPE 01
2 BED

34
TYPE 02 ●
2 BED

40
TYPE 10
1 BED

35
TYPE 09
1 BED

39
TYPE 07
2 BED

36
TYPE 04
2 BED

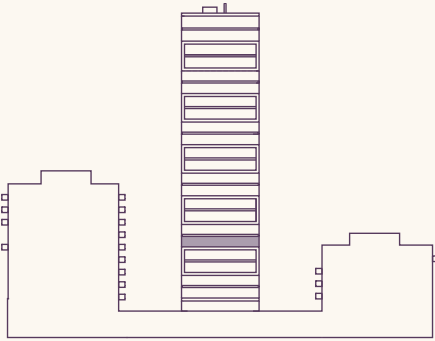
38
TYPE 06
2 BED

37
TYPE 05
2 BED

FLOORS 6

APARTMENTS
41-48

CODA : FLOORPLANS



41 TYPE 11 2 BEDROOM

NIA	68.45 m ²	737 ft ²
LIVING/KITCHEN	5.26 x 6.23 m	17' 4" x 20' 5"
BEDROOM 1	3.77 x 3.31 m	12' 4" x 10' 10"
BEDROOM 2	3.42 x 3.09 m	11' 2" x 10' 2"
BALCONY	9.70 x 1.60 m	31' 11" x 5' 2"

42 TYPE 12 2 BEDROOM

NIA	71.59 m ²	771 ft ²
LIVING/KITCHEN	5.81 x 5.90 m	19' 1" x 19' 4"
BEDROOM 1	3.84 x 3.66 m	12' 7" x 12' 0"
BEDROOM 2	2.73 x 3.09 m	8' 11" x 10' 2"
BALCONY	9.70 x 1.60 m	31' 11" x 5' 2"

43 TYPE 13 1 BEDROOM

NIA	55.20 m ²	594 ft ²
LIVING/KITCHEN	5.73 x 3.75 m	18' 10" x 12' 4"
BEDROOM	4.30 x 3.29 m	14' 1" x 10' 10"
BALCONY	3.30 x 1.56 m	10' 10" x 5' 2"

44 TYPE 14 1 BEDROOM

NIA	52.67 m ²	567 ft ²
LIVING/KITCHEN	6.80 x 4.25 m	22' 4" x 13' 11"
BEDROOM	4.39 x 2.75 m	14' 5" x 9' 0"
BALCONY	1.57 x 4.80 m	5' 2" x 15' 9"

45 TYPE 15 1 BEDROOM

NIA	52.47 m ²	565 ft ²
LIVING	6.26 x 3.47 m	20' 6" x 11' 5"
KITCHEN	4.06 x 2.55 m	13' 4" x 8' 4"
BEDROOM	2.83 x 3.98 m	9' 3" x 13' 1"
BALCONY	9.70 x 5.20 m	31' 11" x 17' 1"

46 TYPE 16 1 BEDROOM

NIA	49.80 m ²	536 ft ²
LIVING	2.89 x 3.47 m	9' 6" x 11' 5"
KITCHEN	4.03 x 2.55 m	13' 3" x 8' 4"
BEDROOM	2.71 x 3.98 m	8' 11" x 13' 1"
BALCONY	9.70 x 5.20 m	31' 11" x 17' 1"

47 TYPE 17 1 BEDROOM

NIA	49.38 m ²	532 ft ²
LIVING	5.50 x 2.24 m	18' 1" x 7' 4"
KITCHEN	6.34 x 1.91 m	20' 10" x 6' 3"
BEDROOM	3.92 x 2.85 m	12' 10" x 9' 4"
BALCONY	4.80 x 1.56 m	15' 9" x 5' 2"

48 TYPE 18 1 BEDROOM

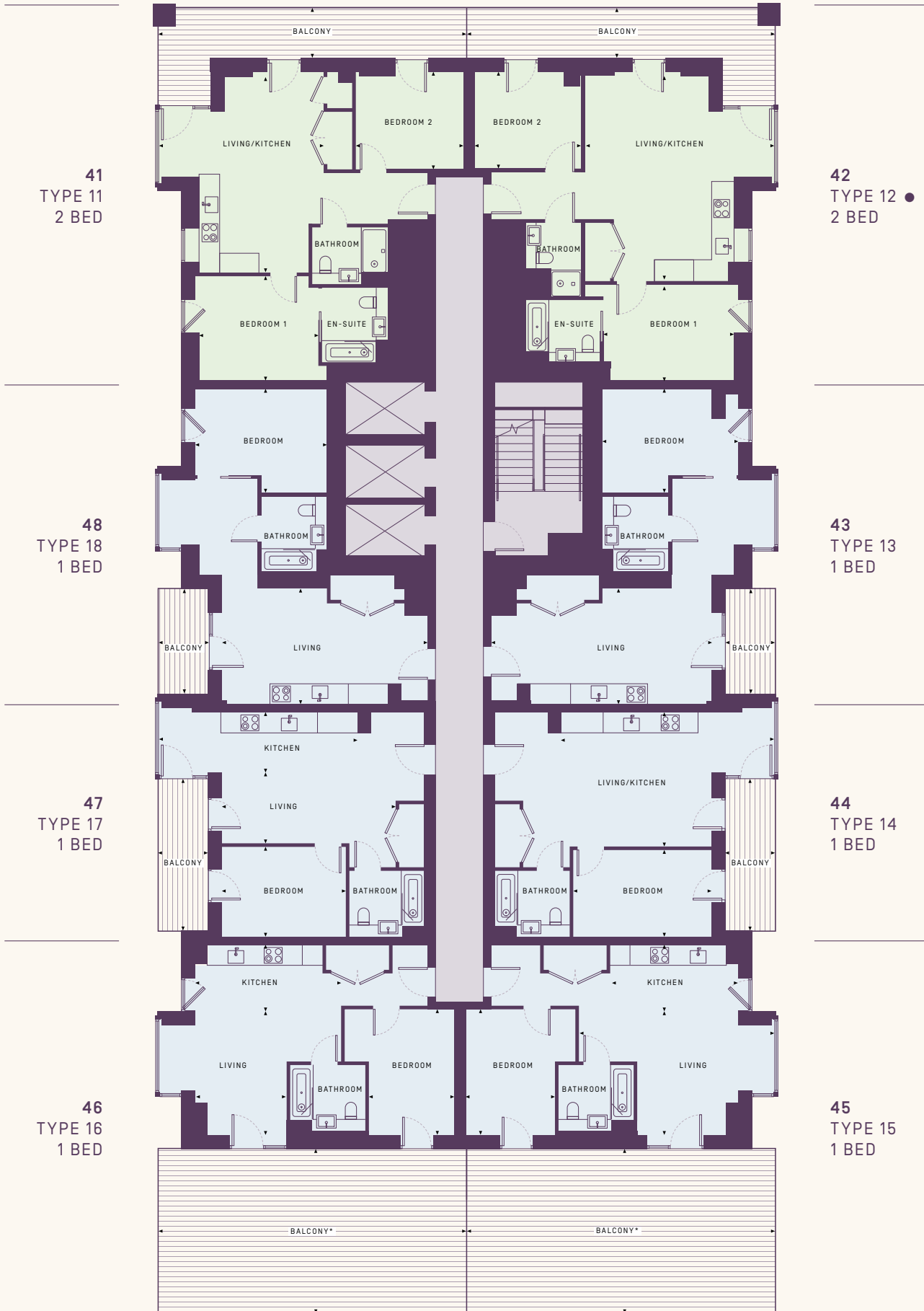
NIA	52.62 m ²	566 ft ²
LIVING/KITCHEN	6.51 x 3.75 m	21' 4" x 12' 3"
BEDROOM	4.17 x 3.29 m	13' 8" x 10' 10"
BALCONY	3.30 x 1.56 m	10' 10" x 5' 2"

● WHEELCHAIR ADAPTABLE UNITS

1 BEDROOM

2 BEDROOM

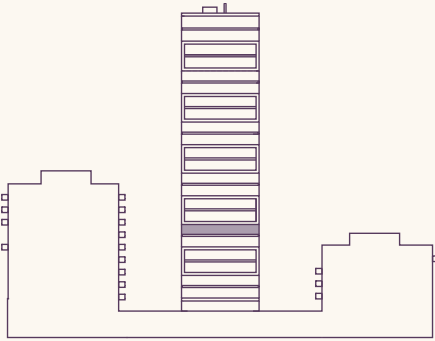
Floorplans are for approximate measurements only. Exact layouts and sizes may vary. All measurements may vary within a tolerance of 5%. The dimensions are not intended to be used for carpet sizes, appliances or items of furniture.



FLOORS 7

APARTMENTS
49-56

CODA : FLOORPLANS



49 TYPE 11 2 BEDROOM

NIA	68.45 m ²	737 ft ²
LIVING/KITCHEN	5.26 x 6.23 m	17' 4" x 20' 5"
BEDROOM 1	3.77 x 3.31 m	12' 4" x 10' 10"
BEDROOM 2	3.42 x 3.09 m	11' 2" x 10' 2"
BALCONY	9.70 x 1.60 m	31' 11" x 5' 2"

50 TYPE 12 2 BEDROOM

NIA	71.59 m ²	771 ft ²
LIVING/KITCHEN	5.81 x 5.90 m	19' 1" x 19' 4"
BEDROOM 1	3.84 x 3.66 m	12' 7" x 12' 0"
BEDROOM 2	2.73 x 3.09 m	8' 11" x 10' 2"
BALCONY	9.70 x 1.60 m	31' 11" x 5' 2"

51 TYPE 13 1 BEDROOM

NIA	55.20 m ²	594 ft ²
LIVING/KITCHEN	5.73 x 3.75 m	18' 10" x 12' 4"
BEDROOM	4.30 x 3.29 m	14' 1" x 10' 10"
BALCONY	3.30 x 1.56 m	10' 10" x 5' 2"

52 TYPE 14 1 BEDROOM

NIA	52.67 m ²	567 ft ²
LIVING/KITCHEN	6.80 x 4.25 m	22' 4" x 13' 11"
BEDROOM	4.39 x 2.75 m	14' 5" x 9' 0"
BALCONY	1.57 x 4.80 m	5' 2" x 15' 9"

53 TYPE 15 1 BEDROOM

NIA	52.47 m ²	565 ft ²
LIVING	6.26 x 3.47 m	20' 6" x 11' 5"
KITCHEN	4.06 x 2.55 m	13' 4" x 8' 4"
BEDROOM	2.83 x 3.98 m	9' 3" x 13' 1"
BALCONY	9.70 x 1.60 m	31' 11" x 5' 2"

54 TYPE 16 1 BEDROOM

NIA	49.80 m ²	536 ft ²
LIVING	2.89 x 3.47 m	9' 6" x 11' 5"
KITCHEN	4.03 x 2.55 m	13' 3" x 8' 4"
BEDROOM	2.71 x 3.98 m	8' 11" x 13' 1"
BALCONY	9.70 x 1.60 m	31' 11" x 5' 2"

55 TYPE 17 1 BEDROOM

NIA	49.38 m ²	532 ft ²
LIVING	5.50 x 2.24 m	18' 1" x 7' 4"
KITCHEN	6.34 x 1.91 m	20' 10" x 6' 3"
BEDROOM	3.92 x 2.85 m	12' 10" x 9' 4"
BALCONY	4.80 x 1.56 m	15' 9" x 5' 2"

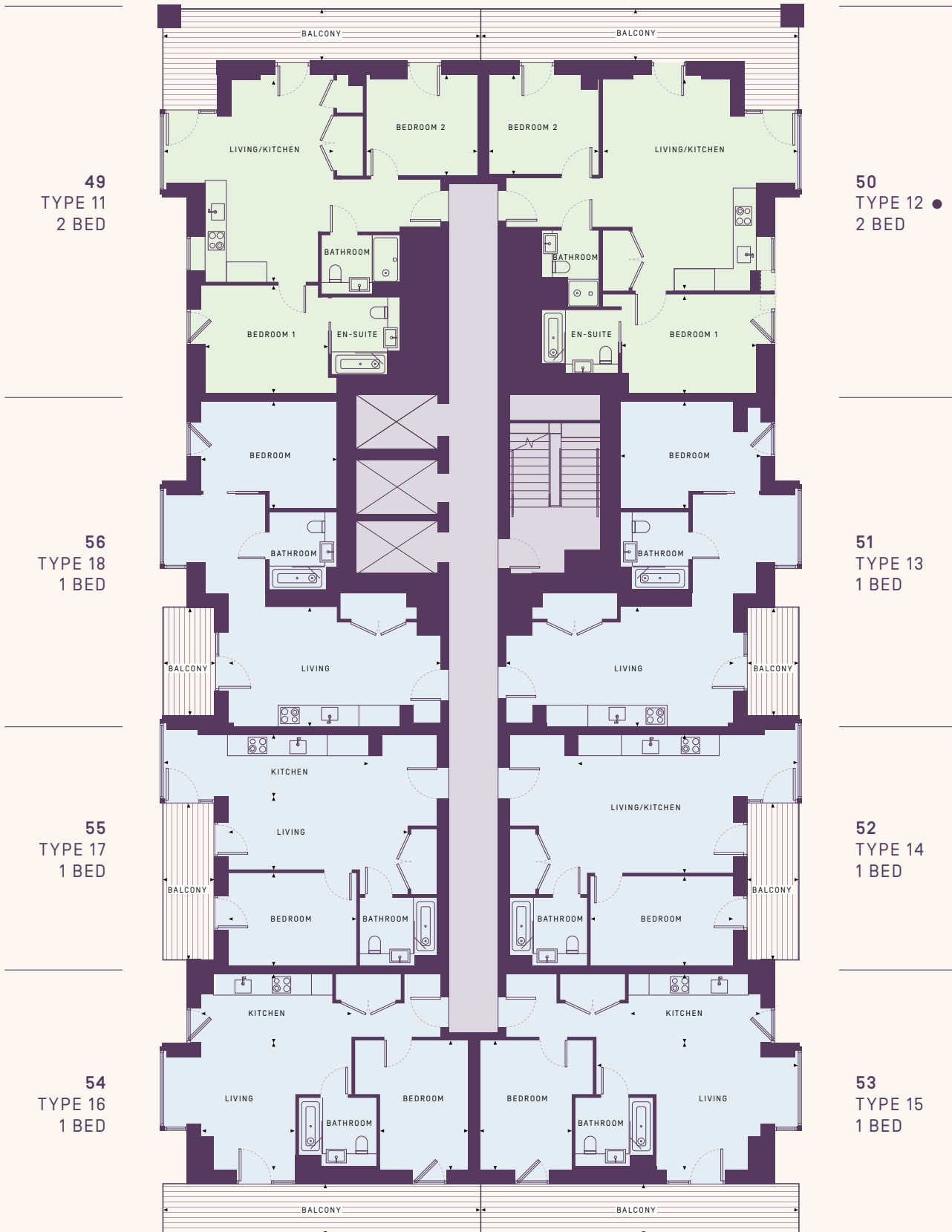
56 TYPE 18 1 BEDROOM

NIA	52.62 m ²	566 ft ²
LIVING/KITCHEN	6.51 x 3.75 m	21' 4" x 12' 3"
BEDROOM	4.17 x 3.29 m	13' 8" x 10' 10"
BALCONY	3.30 x 1.56 m	10' 10" x 5' 2"

● WHEELCHAIR ADAPTABLE UNITS

- 1 BEDROOM
- 2 BEDROOM

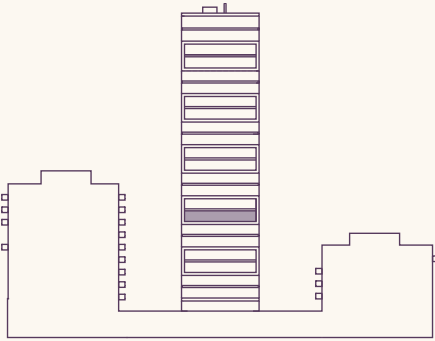
Floorplans are for approximate measurements only. Exact layouts and sizes may vary. All measurements may vary within a tolerance of 5%. The dimensions are not intended to be used for carpet sizes, appliances or items of furniture.



FLOORS 8

APARTMENTS
57-64

CODA : FLOORPLANS



57 TYPE 11 2 BEDROOM

NIA	68.45 m ²	737 ft ²
LIVING/KITCHEN	5.26 x 6.23 m	17' 4" x 20' 5"
BEDROOM 1	3.77 x 3.31 m	12' 4" x 10' 10"
BEDROOM 2	3.42 x 3.09 m	11' 2" x 10' 2"
BALCONY	9.70 x 1.60 m	31' 11" x 5' 2"

58 TYPE 12 2 BEDROOM

NIA	71.59 m ²	771 ft ²
LIVING/KITCHEN	5.81 x 5.90 m	19' 1" x 19' 4"
BEDROOM 1	3.84 x 3.66 m	12' 7" x 12' 0"
BEDROOM 2	2.73 x 3.09 m	8' 11" x 10' 2"
BALCONY	9.70 x 1.60 m	31' 11" x 5' 2"

59 TYPE 13 1 BEDROOM

NIA	55.20 m ²	594 ft ²
LIVING/KITCHEN	5.73 x 3.75 m	18' 10" x 12' 4"
BEDROOM	4.30 x 3.29 m	14' 1" x 10' 10"
BALCONY	3.30 x 1.56 m	10' 10" x 5' 2"

60 TYPE 14 1 BEDROOM

NIA	52.67 m ²	567 ft ²
LIVING/KITCHEN	6.80 x 4.25 m	22' 4" x 13' 11"
BEDROOM	4.39 x 2.75 m	14' 5" x 9' 0"
BALCONY	1.57 x 4.80 m	5' 2" x 15' 9"

61 TYPE 15 1 BEDROOM

NIA	52.47 m ²	565 ft ²
LIVING	6.26 x 3.47 m	20' 6" x 11' 5"
KITCHEN	4.06 x 2.55 m	13' 4" x 8' 4"
BEDROOM	2.83 x 3.98 m	9' 3" x 13' 1"
BALCONY	5.00 x 1.60 m	16' 7" x 5' 2"

62 TYPE 16 1 BEDROOM

NIA	49.80 m ²	536 ft ²
LIVING	2.89 x 3.47 m	9' 6" x 11' 5"
KITCHEN	4.03 x 2.55 m	13' 3" x 8' 4"
BEDROOM	2.71 x 3.98 m	8' 11" x 13' 1"
BALCONY	5.00 x 1.60 m	16' 7" x 5' 2"

63 TYPE 17 1 BEDROOM

NIA	49.38 m ²	532 ft ²
LIVING	5.50 x 2.24 m	18' 1" x 7' 4"
KITCHEN	6.34 x 1.91 m	20' 10" x 6' 3"
BEDROOM	3.92 x 2.85 m	12' 10" x 9' 4"
BALCONY	4.80 x 1.56 m	15' 9" x 5' 2"

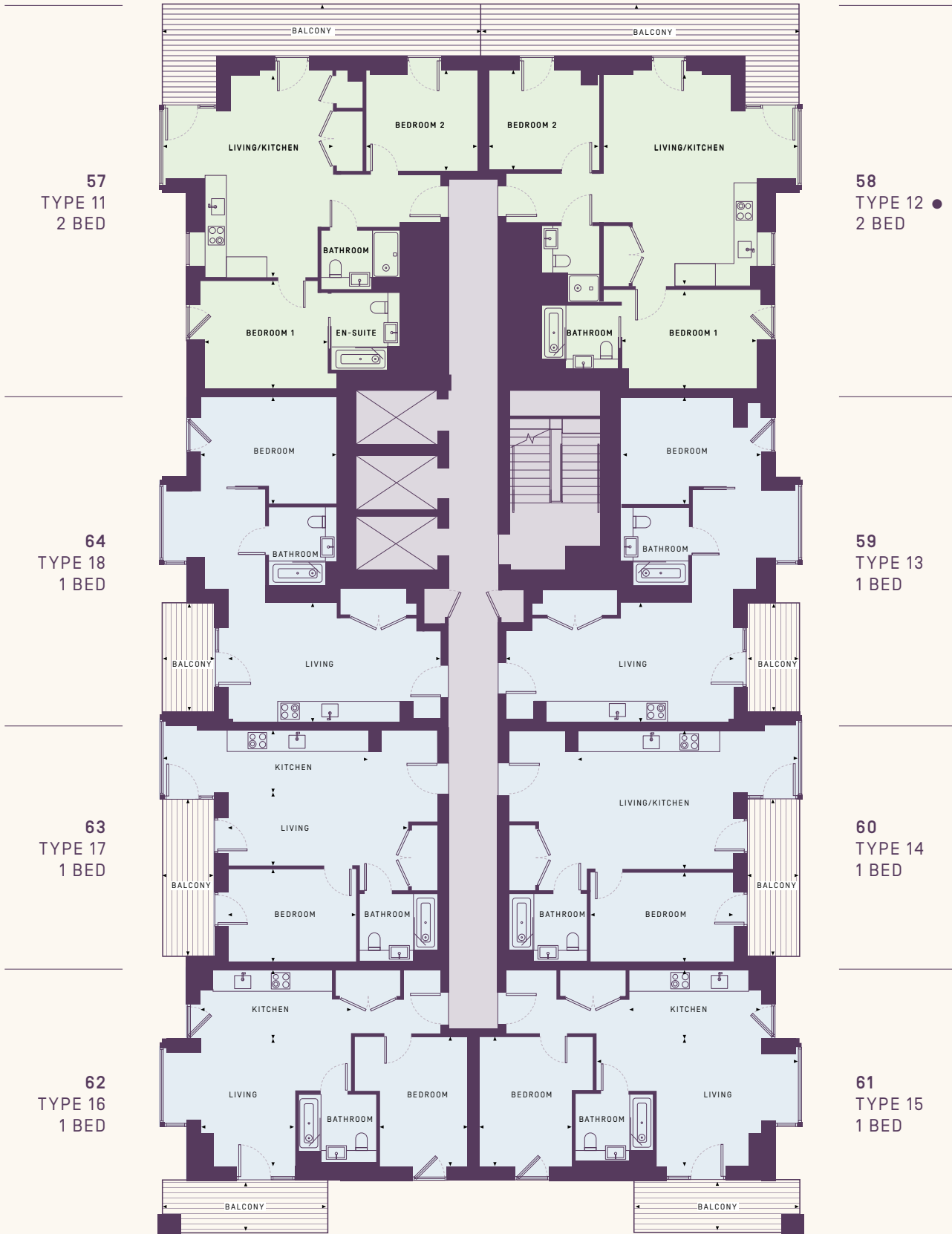
64 TYPE 18 1 BEDROOM

NIA	52.62 m ²	566 ft ²
LIVING/KITCHEN	6.51 x 3.75 m	21' 4" x 12' 3"
BEDROOM	4.17 x 3.29 m	13' 8" x 10' 10"
BALCONY	3.30 x 1.56 m	10' 10" x 5' 2"

● WHEELCHAIR ADAPTABLE UNITS

- 1 BEDROOM
- 2 BEDROOM

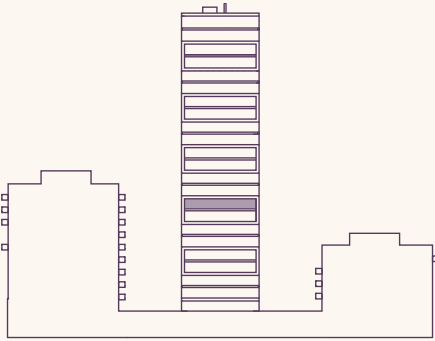
Floorplans are for approximate measurements only. Exact layouts and sizes may vary. All measurements may vary within a tolerance of 5%. The dimensions are not intended to be used for carpet sizes, appliances or items of furniture.



FLOORS 9

APARTMENTS
65-72

CODA : FLOORPLANS



65			
TYPE 11	2 BEDROOM		
NIA	68.45 m²	737 ft²	
LIVING/KITCHEN	5.26 x 6.23 m	17' 4" x 20' 5"	
BEDROOM 1	3.77 x 3.31 m	12' 4" x 10' 10"	
BEDROOM 2	3.42 x 3.09 m	11' 2" x 10' 2"	
BALCONY	9.70 x 1.60 m	31' 11" x 5' 2"	

66			
TYPE 12	2 BEDROOM		
NIA	71.59 m²	771 ft²	
LIVING/KITCHEN	5.81 x 5.90 m	19' 1" x 19' 4"	
BEDROOM 1	3.84 x 3.66 m	12' 7" x 12' 0"	
BEDROOM 2	2.73 x 3.09 m	8' 11" x 10' 2"	
BALCONY	9.70 x 1.60 m	31' 11" x 5' 2"	

67			
TYPE 13	1 BEDROOM		
NIA	55.20 m²	594 ft²	
LIVING/KITCHEN	5.73 x 3.75 m	18' 10" x 12' 4"	
BEDROOM	4.30 x 3.29 m	14' 1" x 10' 10"	
BALCONY	3.30 x 1.56 m	10' 10" x 5' 2"	

68			
TYPE 14	1 BEDROOM		
NIA	52.67 m²	567 ft²	
LIVING/KITCHEN	6.80 x 4.25 m	22' 4" x 13' 11"	
BEDROOM	4.39 x 2.75 m	14' 5" x 9' 0"	
BALCONY	1.57 x 4.80 m	5' 2" x 15' 9"	

69			
TYPE 15	1 BEDROOM		
NIA	52.47 m²	565 ft²	
LIVING	6.26 x 3.47 m	20' 6" x 11' 5"	
KITCHEN	4.06 x 2.55 m	13' 4" x 8' 4"	
BEDROOM	2.83 x 3.98 m	9' 3" x 13' 1"	
BALCONY	5.00 x 1.60 m	16' 7" x 5' 2"	

70			
TYPE 16	1 BEDROOM		
NIA	49.80 m²	536 ft²	
LIVING	2.89 x 3.47 m	9' 6" x 11' 5"	
KITCHEN	4.03 x 2.55 m	13' 3" x 8' 4"	
BEDROOM	2.71 x 3.98 m	8' 11" x 13' 1"	
BALCONY	5.00 x 1.60 m	16' 7" x 5' 2"	

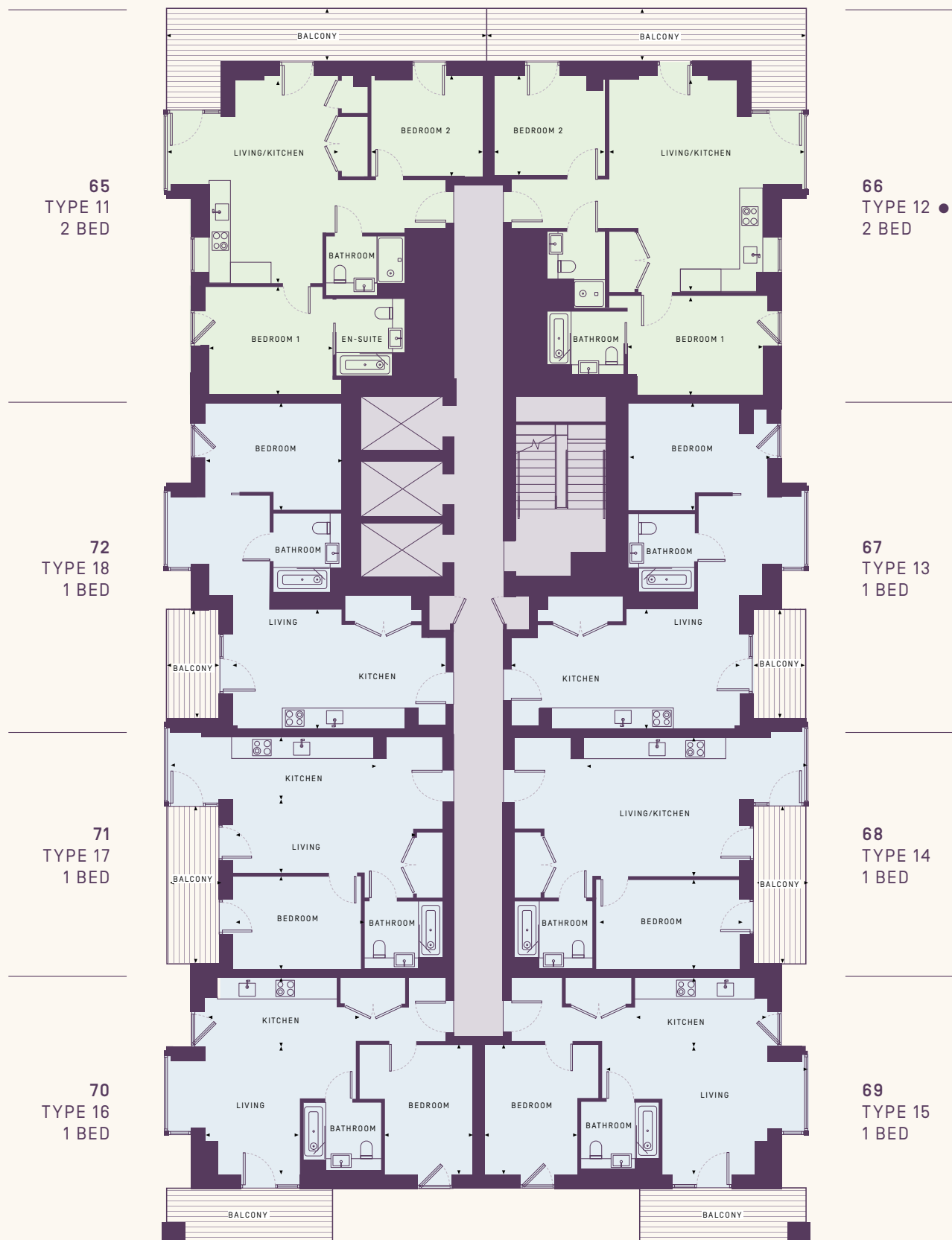
71			
TYPE 17	1 BEDROOM		
NIA	49.38 m²	532 ft²	
LIVING	5.50 x 2.24 m	18' 1" x 7' 4"	
KITCHEN	6.34 x 1.91 m	20' 10" x 6' 3"	
BEDROOM	3.92 x 2.85 m	12' 10" x 9' 4"	
BALCONY	4.80 x 1.56 m	15' 9" x 5' 2"	

72			
TYPE 18	1 BEDROOM		
NIA	52.62 m²	566 ft²	
LIVING/KITCHEN	6.51 x 3.75 m	21' 4" x 12' 3"	
BEDROOM	4.17 x 3.29 m	13' 8" x 10' 10"	
BALCONY	3.30 x 1.56 m	10' 10" x 5' 2"	

● WHEELCHAIR ADAPTABLE UNITS

- 1 BEDROOM
- 2 BEDROOM

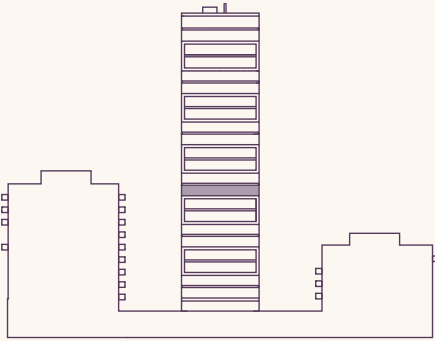
Floorplans are for approximate measurements only. Exact layouts and sizes may vary. All measurements may vary within a tolerance of 5%. The dimensions are not intended to be used for carpet sizes, appliances or items of furniture.



FLOORS 10

APARTMENTS
73-78

CODA : FLOORPLANS



73 TYPE 11 2 BEDROOM

NIA	68.45 m ²	737 ft ²
LIVING/KITCHEN	5.26 x 6.23 m	17' 4" x 20' 5"
BEDROOM 1	3.77 x 3.31 m	12' 4" x 10' 10"
BEDROOM 2	3.42 x 3.09 m	11' 2" x 10' 2"
BALCONY	9.70 x 1.60 m	31' 11" x 5' 2"

74 TYPE 12 2 BEDROOM

NIA	71.59 m ²	771 ft ²
LIVING/KITCHEN	5.81 x 5.90 m	19' 1" x 19' 4"
BEDROOM 1	3.84 x 3.66 m	12' 7" x 12' 0"
BEDROOM 2	2.73 x 3.09 m	8' 11" x 10' 2"
BALCONY	9.70 x 1.60 m	31' 11" x 5' 2"

75 TYPE 19 1 BEDROOM

NIA	54.85 m ²	590 ft ²
LIVING/KITCHEN	9.03 x 3.64 m	29' 7" x 11' 11"
BEDROOM	3.46 x 3.40 m	11' 4" x 11' 2"
BALCONY	1.57 x 3.30 m	5' 2" x 10' 10"

76 TYPE 20 2 BEDROOM

NIA	90.46 m ²	974 ft ²
LIVING	6.88 x 5.42 m	22' 7" x 17' 9"
KITCHEN	4.72 x 2.91 m	15' 6" x 9' 7"
BEDROOM 1	4.92 x 2.76 m	16' 1" x 9' 1"
BEDROOM 2	2.78 x 4.41 m	9' 1" x 14' 6"
BALCONY	9.70 x 2.10 m	31' 11" x 6' 8"

77 TYPE 21 2 BEDROOM

NIA	88.84 m ²	956 ft ²
LIVING	6.88 x 5.42 m	22' 7" x 17' 9"
KITCHEN	4.72 x 2.91 m	15' 6" x 9' 7"
BEDROOM 1	4.85 x 2.76 m	15' 11" x 9' 1"
BEDROOM 2	2.78 x 4.41 m	9' 1" x 14' 6"
BALCONY	9.70 x 2.10 m	31' 11" x 6' 8"

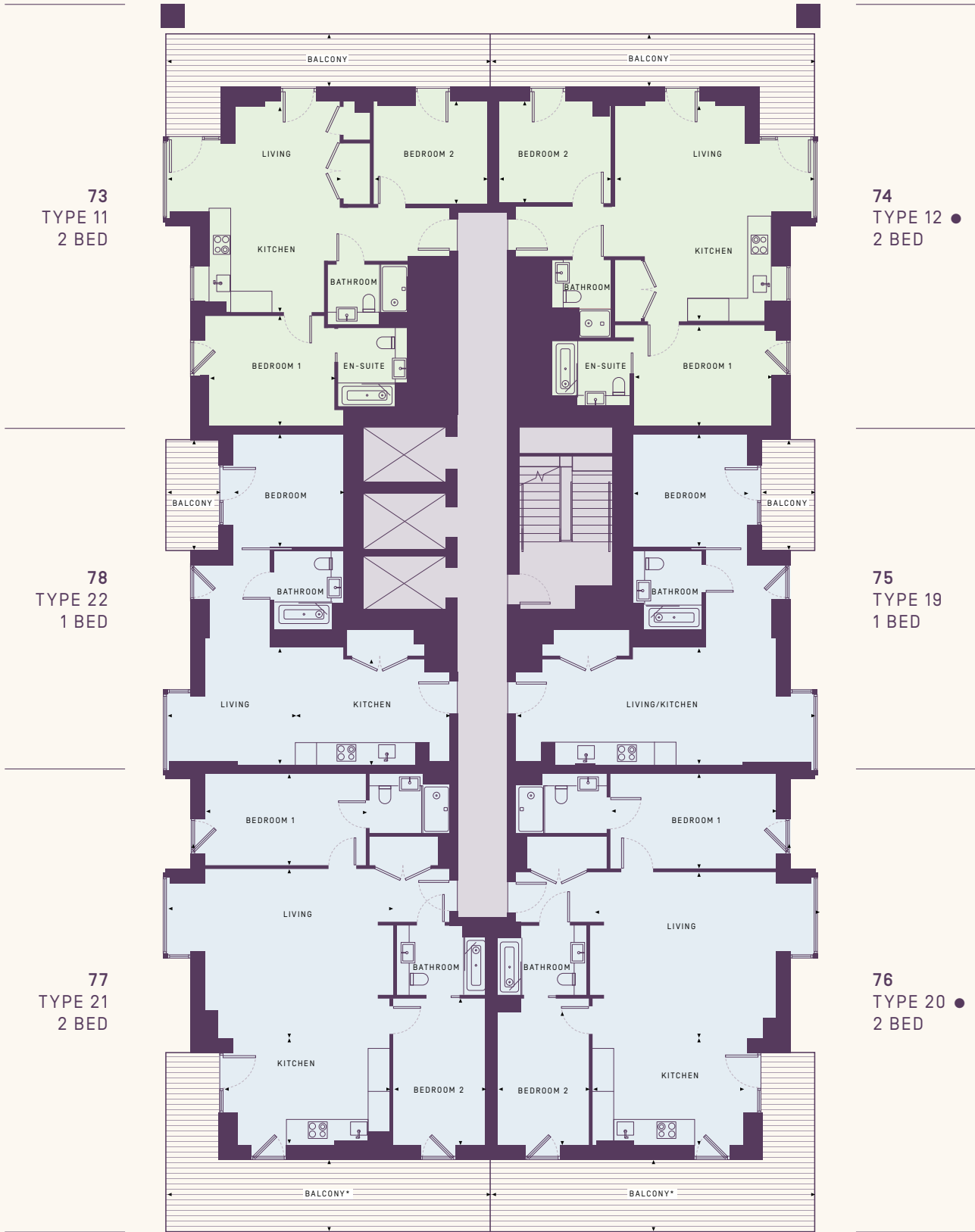
78 TYPE 22 1 BEDROOM

NIA	52.29 m ²	563 ft ²
LIVING	3.93 x 3.64 m	12' 11" x 11' 11"
KITCHEN	4.64 x 3.20 m	15' 2" x 10' 6"
BEDROOM	3.33 x 3.40 m	10' 11" x 11' 2"
BALCONY	1.56 x 3.30 m	5' 2" x 10' 10"

● WHEELCHAIR ADAPTABLE UNITS

- 1 BEDROOM
- 2 BEDROOM

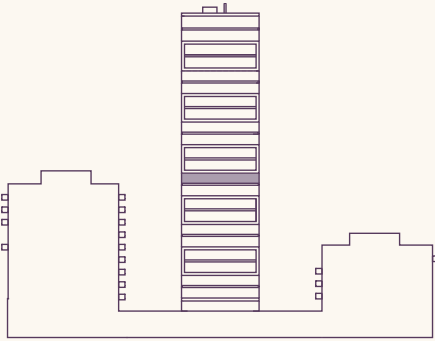
Floorplans are for approximate measurements only. Exact layouts and sizes may vary. All measurements may vary within a tolerance of 5%. The dimensions are not intended to be used for carpet sizes, appliances or items of furniture.



FLOORS 11

APARTMENTS
79-84

CODA : FLOORPLANS



79
TYPE 11 2 BEDROOM

NIA	68.45 m ²	737 ft ²
LIVING/KITCHEN	5.26 x 6.23 m	17' 4" x 20' 5"
BEDROOM 1	3.77 x 3.31 m	12' 4" x 10' 10"
BEDROOM 2	3.42 x 3.09 m	11' 2" x 10' 2"
BALCONY	9.70 x 1.60 m	31' 11" x 5' 2"

80
TYPE 12 2 BEDROOM

NIA	71.59 m ²	771 ft ²
LIVING/KITCHEN	5.81 x 5.90 m	19' 1" x 19' 4"
BEDROOM 1	3.84 x 3.66 m	12' 7" x 12' 0"
BEDROOM 2	2.73 x 3.09 m	8' 11" x 10' 2"
BALCONY	9.70 x 1.60 m	31' 11" x 5' 2"

81
TYPE 19 1 BEDROOM

NIA	54.85 m ²	590 ft ²
LIVING/KITCHEN	9.03 x 3.64 m	29' 7" x 11' 11"
BEDROOM	3.46 x 3.40 m	11' 4" x 11' 2"
BALCONY	1.57 x 3.30 m	5' 2" x 10' 10"

82
TYPE 20 2 BEDROOM

NIA	90.46 m ²	974 ft ²
LIVING	6.88 x 5.42 m	22' 7" x 17' 9"
KITCHEN	4.72 x 2.91 m	15' 6" x 9' 7"
BEDROOM 1	4.92 x 2.76 m	16' 1" x 9' 1"
BEDROOM 2	2.78 x 4.41 m	9' 1" x 14' 6"
BALCONY	9.70 x 1.60 m	31' 11" x 5' 2"

83
TYPE 21 2 BEDROOM

NIA	88.84 m ²	956 ft ²
LIVING	6.88 x 5.42 m	22' 7" x 17' 9"
KITCHEN	4.72 x 2.91 m	15' 6" x 9' 7"
BEDROOM 1	4.85 x 2.76 m	15' 11" x 9' 1"
BEDROOM 2	2.78 x 4.41 m	9' 1" x 14' 6"
BALCONY	9.70 x 1.60 m	31' 11" x 5' 2"

84
TYPE 22 1 BEDROOM

NIA	52.29 m ²	563 ft ²
LIVING	3.93 x 3.64 m	12' 11" x 11' 11"
KITCHEN	4.64 x 3.20 m	15' 2" x 10' 6"
BEDROOM	3.33 x 3.40 m	10' 11" x 11' 2"
BALCONY	1.56 x 3.30 m	5' 2" x 10' 10"

● WHEELCHAIR ADAPTABLE UNITS

- 1 BEDROOM
- 2 BEDROOM

Floorplans are for approximate measurements only. Exact layouts and sizes may vary. All measurements may vary within a tolerance of 5%. The dimensions are not intended to be used for carpet sizes, appliances or items of furniture.



79
TYPE 11
2 BED



80
TYPE 12 ●
2 BED

84
TYPE 22
1 BED

81
TYPE 19
1 BED

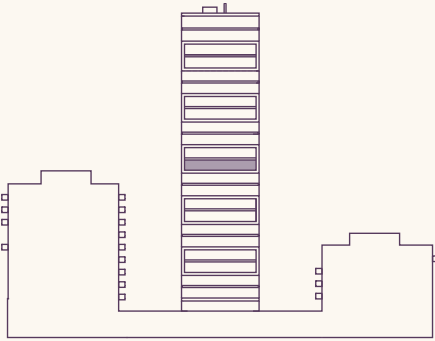
83
TYPE 21
2 BED

82
TYPE 20 ●
2 BED

FLOORS 12

APARTMENTS
85-90

CODA : FLOORPLANS



85 TYPE 11 2 BEDROOM

NIA	68.45m ²	736 ft ²
LIVING/KITCHEN	5.26 x 6.23 m	17' 4" x 20' 6"
BEDROOM 1	3.77 x 3.31 m	12' 4" x 10' 10"
BEDROOM 2	3.42 x 3.09 m	11' 2" x 10' 2"
BALCONY	9.70 x 1.60 m	31' 11" x 5' 2"

86 TYPE 23 2 BEDROOM

NIA	71.62 m ²	771 ft ²
LIVING	5.99 x 3.19 m	19' 8" x 10' 6"
KITCHEN	3.80 x 3.04 m	12' 6" x 10' 0"
BEDROOM 1	4.12 x 3.31 m	13' 6" x 10' 10"
BEDROOM 2	3.45 x 3.09 m	11' 4" x 10' 2"
BALCONY	9.70 x 1.60 m	31' 11" x 5' 2"

87 TYPE 24 2 BEDROOM

NIA	82.45 m ²	887 ft ²
LIVING	4.52 x 4.11 m	14' 10" x 13' 6"
KITCHEN	4.17 x 2.92 m	13' 8" x 9' 7"
BEDROOM 1	5.62 x 2.89 m	18' 5" x 9' 6"
BEDROOM 2	5.51 x 2.75 m	18' 1" x 9' 0"

88 TYPE 25 2 BEDROOM

NIA	68.45 m ²	737 ft ²
LIVING	4.55 x 3.22 m	14' 11" x 10' 7"
KITCHEN	4.52 x 2.19 m	14' 10" x 7' 2"
BEDROOM 1	5.63 x 2.83 m	18' 6" x 9' 3"
BEDROOM 2	2.75 x 3.71 m	9' 0" x 12' 2"
BALCONY	9.70 x 1.60 m	31' 11" x 5' 2"

89 TYPE 26 2 BEDROOM

NIA	68.02 m ²	732 ft ²
LIVING	4.62 x 3.22 m	15' 2" x 10' 7"
KITCHEN	4.06 x 2.19 m	13' 4" x 7' 2"
BEDROOM 1	5.17 x 2.80 m	16' 11" x 9' 2"
BEDROOM 2	2.75 x 3.71 m	9' 0" x 12' 2"
BALCONY	9.70 x 1.60 m	31' 11" x 5' 2"

90 TYPE 27 2 BEDROOM

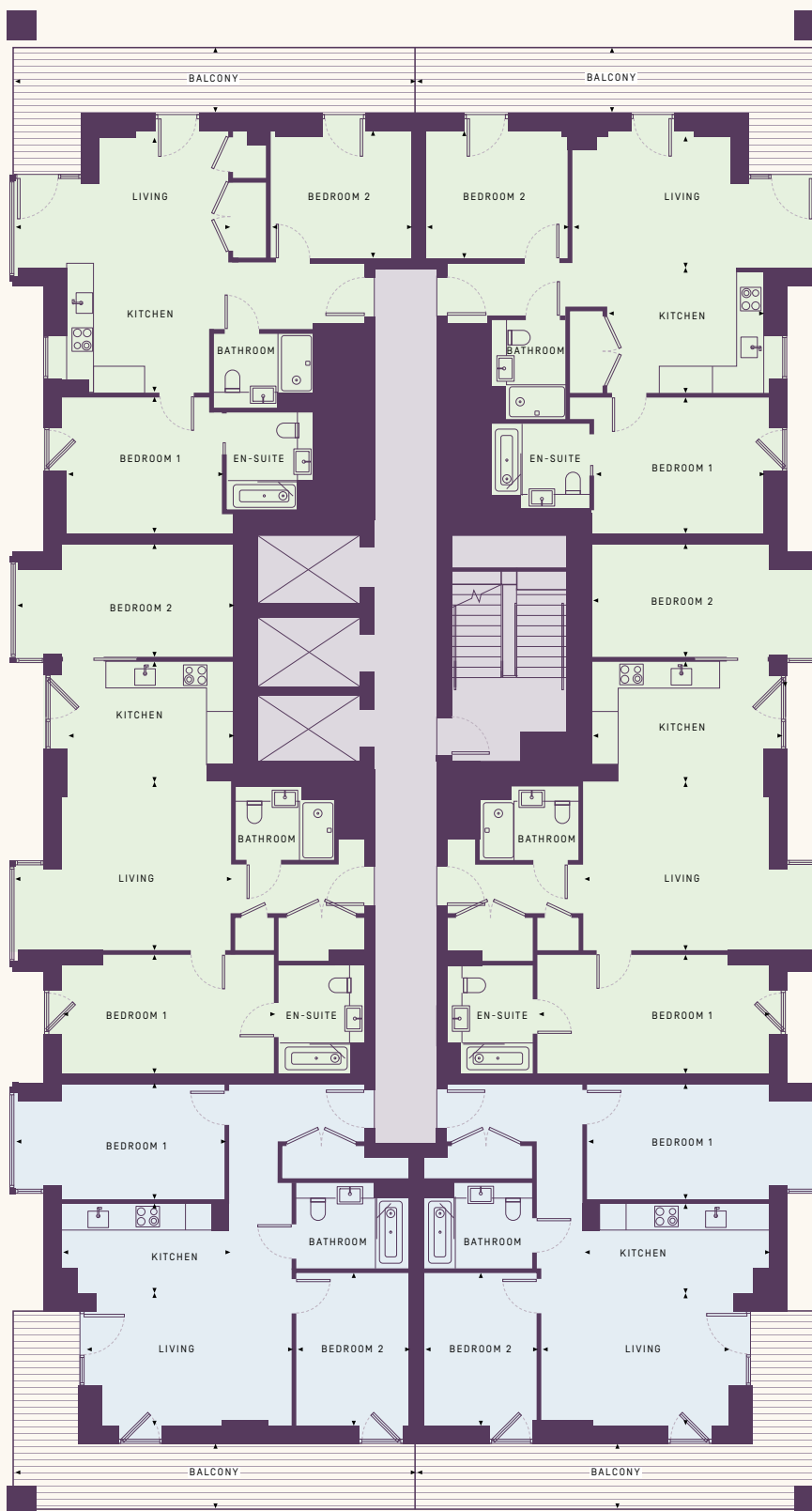
NIA	78.53 m ²	845 ft ²
LIVING	5.33 x 4.11 m	17' 6" x 13' 6"
KITCHEN	4.04 x 2.92 m	13' 3" x 9' 7"
BEDROOM 1	5.16 x 2.89 m	16' 11" x 9' 6"
BEDROOM 2	5.38 x 2.75 m	17' 8" x 9' 0"

- 1 BEDROOM
- 2 BEDROOM

Floorplans are for approximate measurements only. Exact layouts and sizes may vary. All measurements may vary within a tolerance of 5%. The dimensions are not intended to be used for carpet sizes, appliances or items of furniture.



85,
TYPE 11
2 BED



86
TYPE 23
2 BED

90
TYPE 27
2 BED

87
TYPE 24
2 BED

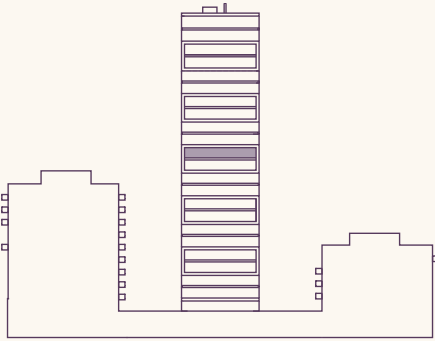
89
TYPE 26
2 BED

88
TYPE 25
2 BED

FLOORS 13

APARTMENTS
91-96

CODA : FLOORPLANS



91 TYPE 11 2 BEDROOM

NIA	68.45m ²	736 ft ²
LIVING/KITCHEN	5.26 x 6.23 m	17' 4" x 20' 6"
BEDROOM 1	3.77 x 3.31 m	12' 4" x 10' 10"
BEDROOM 2	3.42 x 3.09 m	11' 2" x 10' 2"
BALCONY	9.70 x 1.60 m	31' 11" x 5' 2"

92 TYPE 23 2 BEDROOM

NIA	71.62 m ²	771 ft ²
LIVING	5.99 x 3.19 m	19' 8" x 10' 6"
KITCHEN	3.80 x 3.04 m	12' 6" x 10' 0"
BEDROOM 1	4.12 x 3.31 m	13' 6" x 10' 10"
BEDROOM 2	3.45 x 3.09 m	11' 4" x 10' 2"
BALCONY	9.70 x 1.60 m	31' 11" x 5' 2"

93 TYPE 24 2 BEDROOM

NIA	82.45 m ²	887 ft ²
LIVING	4.52 x 4.11 m	14' 10" x 13' 6"
KITCHEN	4.17 x 2.92 m	13' 8" x 9' 7"
BEDROOM 1	5.62 x 2.89 m	18' 5" x 9' 6"
BEDROOM 2	5.51 x 2.75 m	18' 1" x 9' 0"

94 TYPE 25 2 BEDROOM

NIA	68.45 m ²	737 ft ²
LIVING	4.55 x 3.22 m	14' 11" x 10' 7"
KITCHEN	4.52 x 2.19 m	14' 10" x 7' 2"
BEDROOM 1	5.63 x 2.83 m	18' 6" x 9' 3"
BEDROOM 2	2.75 x 3.71 m	9' 0" x 12' 2"
BALCONY	9.70 x 1.60 m	31' 11" x 5' 2"

95 TYPE 26 2 BEDROOM

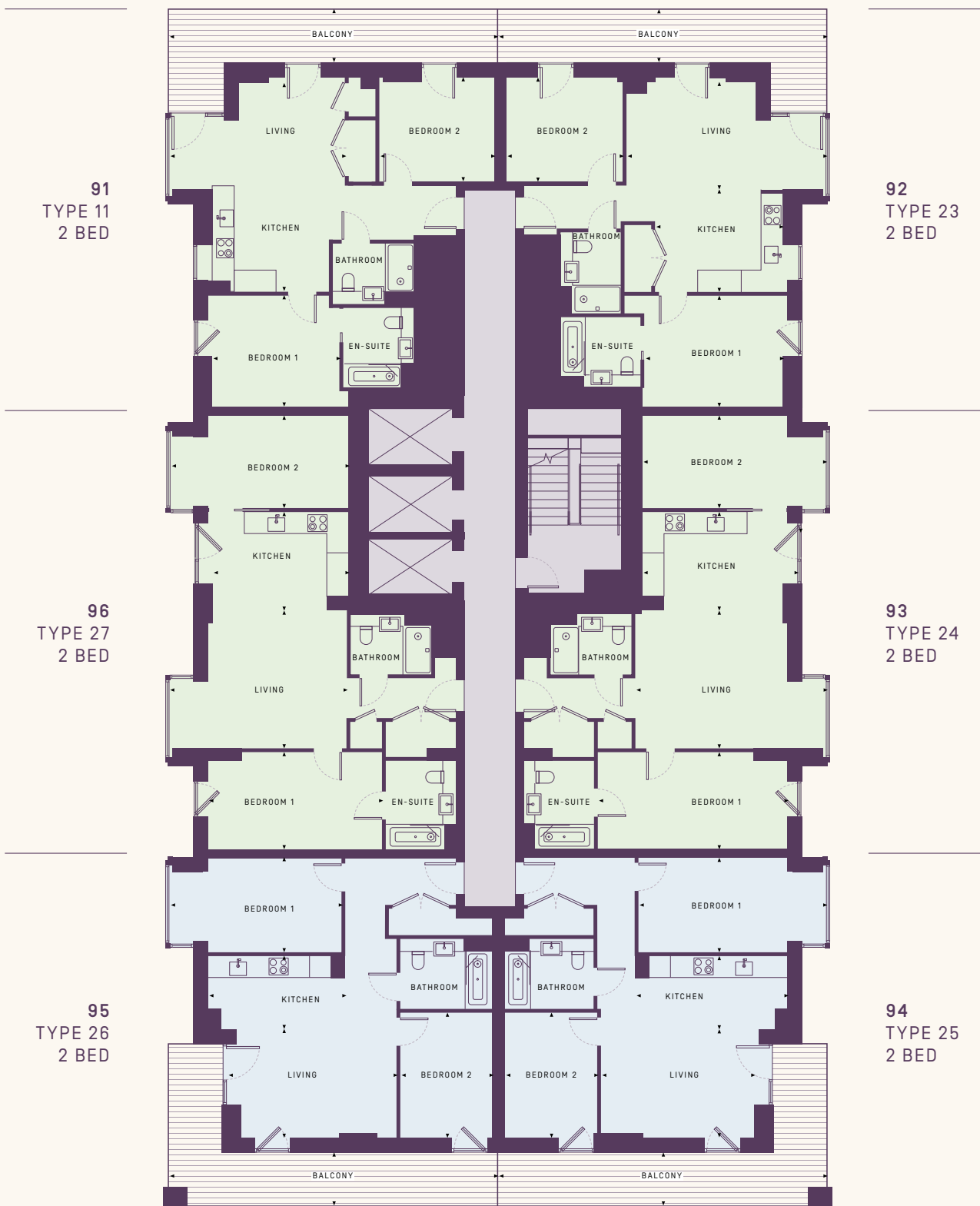
NIA	68.02 m ²	732 ft ²
LIVING	4.62 x 3.22 m	15' 2" x 10' 7"
KITCHEN	4.06 x 2.19 m	13' 4" x 7' 2"
BEDROOM 1	5.17 x 2.80 m	16' 11" x 9' 2"
BEDROOM 2	2.75 x 3.71 m	9' 0" x 12' 2"
BALCONY	9.70 x 1.60 m	31' 11" x 5' 2"

96 TYPE 27 2 BEDROOM

NIA	78.53 m ²	845 ft ²
LIVING	5.33 x 4.11 m	17' 6" x 13' 6"
KITCHEN	4.04 x 2.92 m	13' 3" x 9' 7"
BEDROOM 1	5.16 x 2.89 m	16' 11" x 9' 6"
BEDROOM 2	5.38 x 2.75 m	17' 8" x 9' 0"

- 1 BEDROOM
- 2 BEDROOM

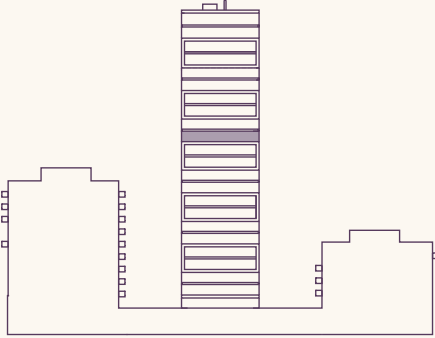
Floorplans are for approximate measurements only. Exact layouts and sizes may vary. All measurements may vary within a tolerance of 5%. The dimensions are not intended to be used for carpet sizes, appliances or items of furniture.



FLOORS 14

APARTMENTS
97-101

CODA : FLOORPLANS



97
TYPE 01 2 BEDROOM

NIA	69.64 m ²	750 ft ²
LIVING/KITCHEN	4.07 x 6.23 m	13' 4" x 20' 5"
BEDROOM 1	3.77 x 3.31 m	12' 4" x 10' 10"
BEDROOM 2	3.42 x 3.09 m	11' 2" x 10' 2"
BALCONY	9.70 x 1.60 m	31' 11" x 5' 2"

98
TYPE 28 2 BEDROOM

NIA	72.87 m ²	784 ft ²
LIVING/KITCHEN	4.78 x 6.23 m	15' 8" x 20' 5"
BEDROOM 1	4.12 x 3.31 m	13' 6" x 10' 10"
BEDROOM 2	3.45 x 3.09 m	11' 4" x 10' 2"
BALCONY	9.70 x 1.60 m	31' 11" x 5' 2"

99
TYPE 13 1 BEDROOM

NIA	55.20 m ²	594 ft ²
LIVING/KITCHEN	5.73 x 3.75 m	18' 10" x 12' 4"
BEDROOM	4.30 x 3.29 m	14' 1" x 10' 10"
BALCONY	3.30 x 1.56 m	10' 10" x 5' 2"

100
TYPE 29 2 BEDROOM

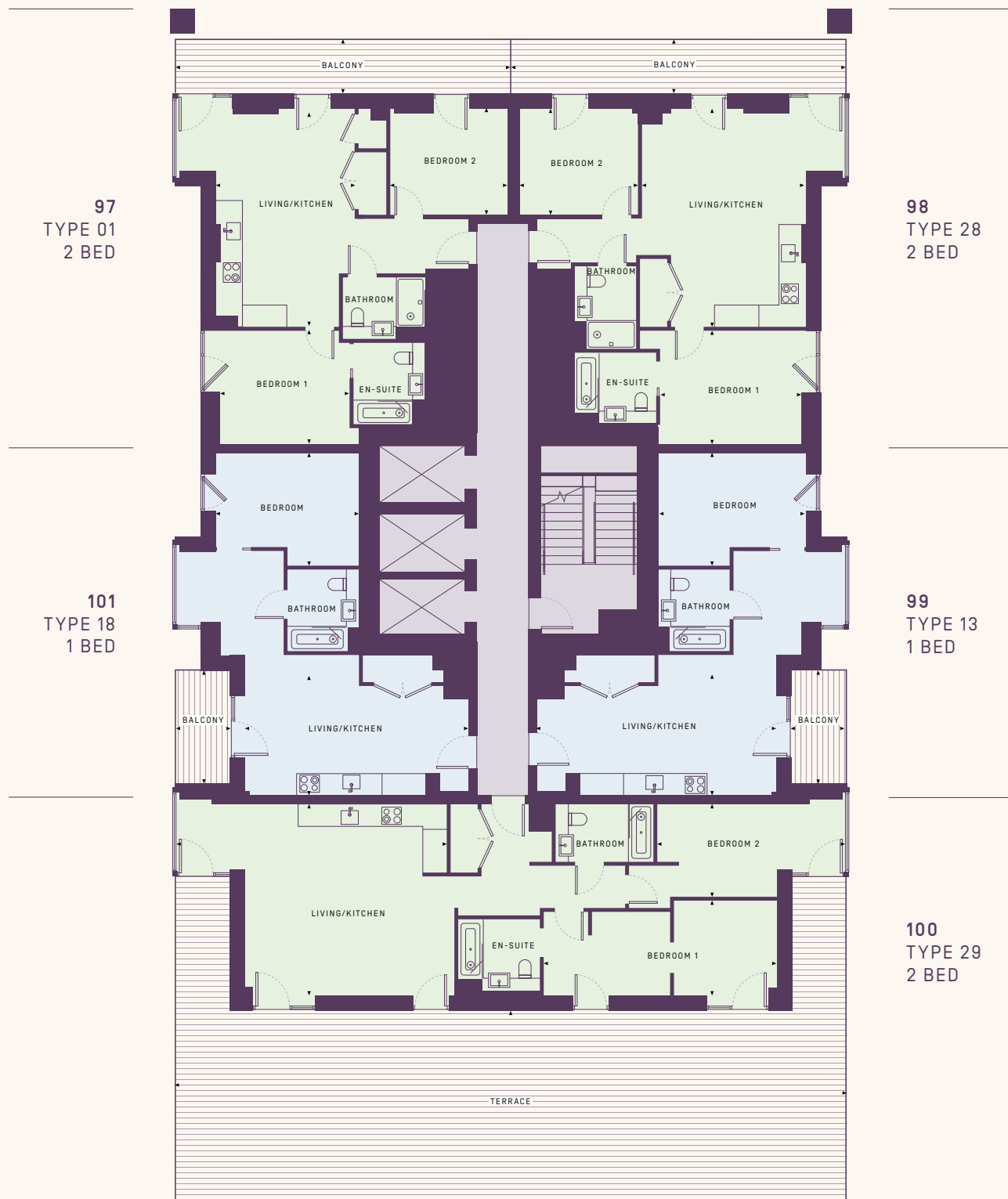
NIA	94.14 m ²	1,014 ft ²
LIVING/KITCHEN	7.94 x 5.57 m	26' 1" x 18' 3"
BEDROOM 1	6.79 x 2.77 m	22' 3" x 9' 1"
BEDROOM 2	5.53 x 2.70 m	18' 2" x 8' 10"
TERRACE	19.40 x 5.60 m	63' 10" x 18' 4"

101
TYPE 18 1 BEDROOM

NIA	52.62 m ²	566 ft ²
LIVING/KITCHEN	6.51 x 3.75 m	21' 4" x 12' 3"
BEDROOM	4.17 x 3.29 m	13' 8" x 10' 10"
BALCONY	3.30 x 1.56 m	10' 10" x 5' 2"

- 1 BEDROOM
- 2 BEDROOM

Floorplans are for approximate measurements only. Exact layouts and sizes may vary. All measurements may vary within a tolerance of 5%. The dimensions are not intended to be used for carpet sizes, appliances or items of furniture.



97
TYPE 01
2 BED

98
TYPE 28
2 BED

101
TYPE 18
1 BED

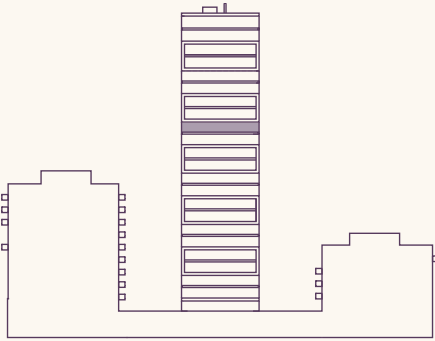
99
TYPE 13
1 BED

100
TYPE 29
2 BED

FLOORS 15

APARTMENTS
102 -106

CODA : FLOORPLANS



102 TYPE 01 2 BEDROOM

NIA	69.64 m²	750 ft²
LIVING/KITCHEN	4.07 x 6.23 m	13' 4" x 20' 5"
BEDROOM 1	3.77 x 3.31 m	12' 4" x 10' 10"
BEDROOM 2	3.42 x 3.09 m	11' 2" x 10' 2"
BALCONY	9.70 x 1.60 m	31' 11" x 5' 2"

103 TYPE 28 2 BEDROOM

NIA	72.87 m²	784 ft²
LIVING/KITCHEN	4.78 x 6.23 m	15' 8" x 20' 5"
BEDROOM 1	4.12 x 3.31 m	13' 6" x 10' 10"
BEDROOM 2	3.45 x 3.09 m	11' 4" x 10' 2"
BALCONY	9.70 x 1.60 m	31' 11" x 5' 2"

104 TYPE 13 1 BEDROOM

NIA	55.20 m²	594 ft²
LIVING/KITCHEN	5.73 x 3.75 m	18' 10" x 12' 4"
BEDROOM	4.30 x 3.29 m	14' 1" x 10' 10"
BALCONY	3.30 x 1.56 m	10' 10" x 5' 2"

105 TYPE 29 2 BEDROOM

NIA	94.14 m²	1,014 ft²
LIVING/KITCHEN	7.94 x 5.57 m	26' 1" x 18' 3"
BEDROOM 1	6.79 x 2.77 m	22' 3" x 9' 1"
BEDROOM 2	5.53 x 2.70 m	18' 2" x 8' 10"
BALCONY	19.40 x 1.60 m	63' 10" x 5' 2"

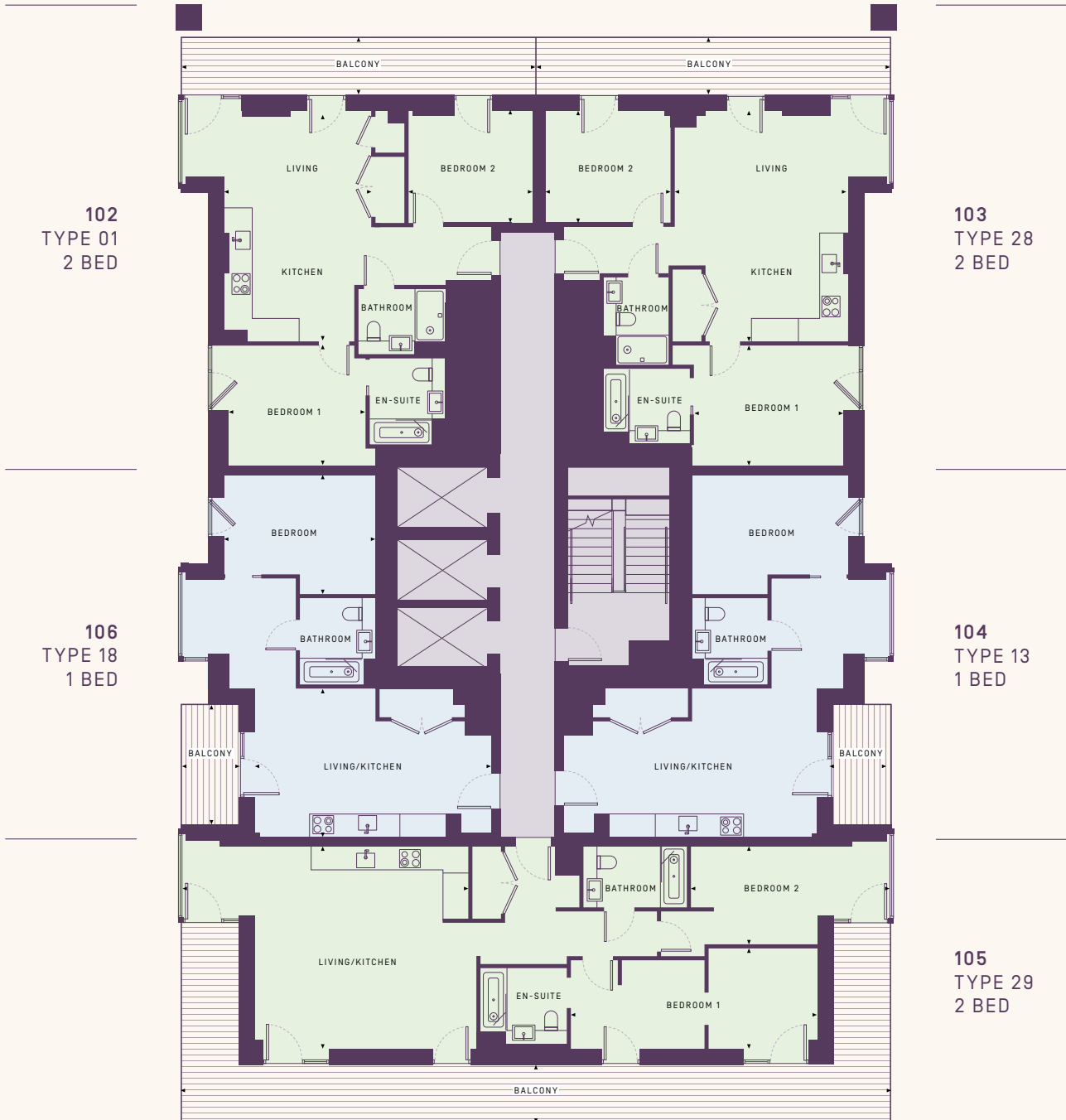
106 TYPE 18 1 BEDROOM

NIA	52.62 m²	566 ft²
LIVING/KITCHEN	6.51 x 3.75 m	21' 4" x 12' 3"
BEDROOM	4.17 x 3.29 m	13' 8" x 10' 10"
BALCONY	3.30 x 1.56 m	10' 10" x 5' 2"

1 BEDROOM

2 BEDROOM

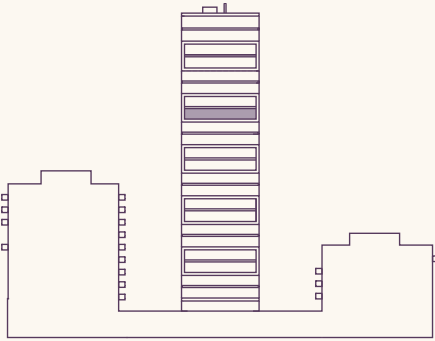
Floorplans are for approximate measurements only. Exact layouts and sizes may vary. All measurements may vary within a tolerance of 5%. The dimensions are not intended to be used for carpet sizes, appliances or items of furniture.



FLOORS 16

APARTMENTS
107-110

CODA : FLOORPLANS



107 TYPE 30 2 BEDROOM

NIA	71.06 m ²	765 ft ²
LIVING	4.74 x 3.19 m	15' 6" x 10' 6"
KITCHEN	3.46 x 3.79 m	11' 4" x 12' 5"
BEDROOM 1	3.77 x 3.20 m	12' 4" x 10' 6"
BEDROOM 2	3.96 x 3.09 m	13' 0" x 10' 2"
BALCONY	9.70 x 1.60 m	31' 11" x 5' 2"

108 TYPE 31 2 BEDROOM

NIA	74.32 m ²	800 ft ²
LIVING	4.93 x 3.19 m	16' 2" x 10' 6"
KITCHEN	4.09 x 3.79 m	13' 5" x 12' 5"
BEDROOM 1	4.40 x 3.20 m	14' 5" x 10' 6"
BEDROOM 2	3.61 x 3.09 m	11' 10" x 10' 2"
BALCONY	9.70 x 1.60 m	31' 11" x 5' 2"

109 TYPE 32 2 BEDROOM

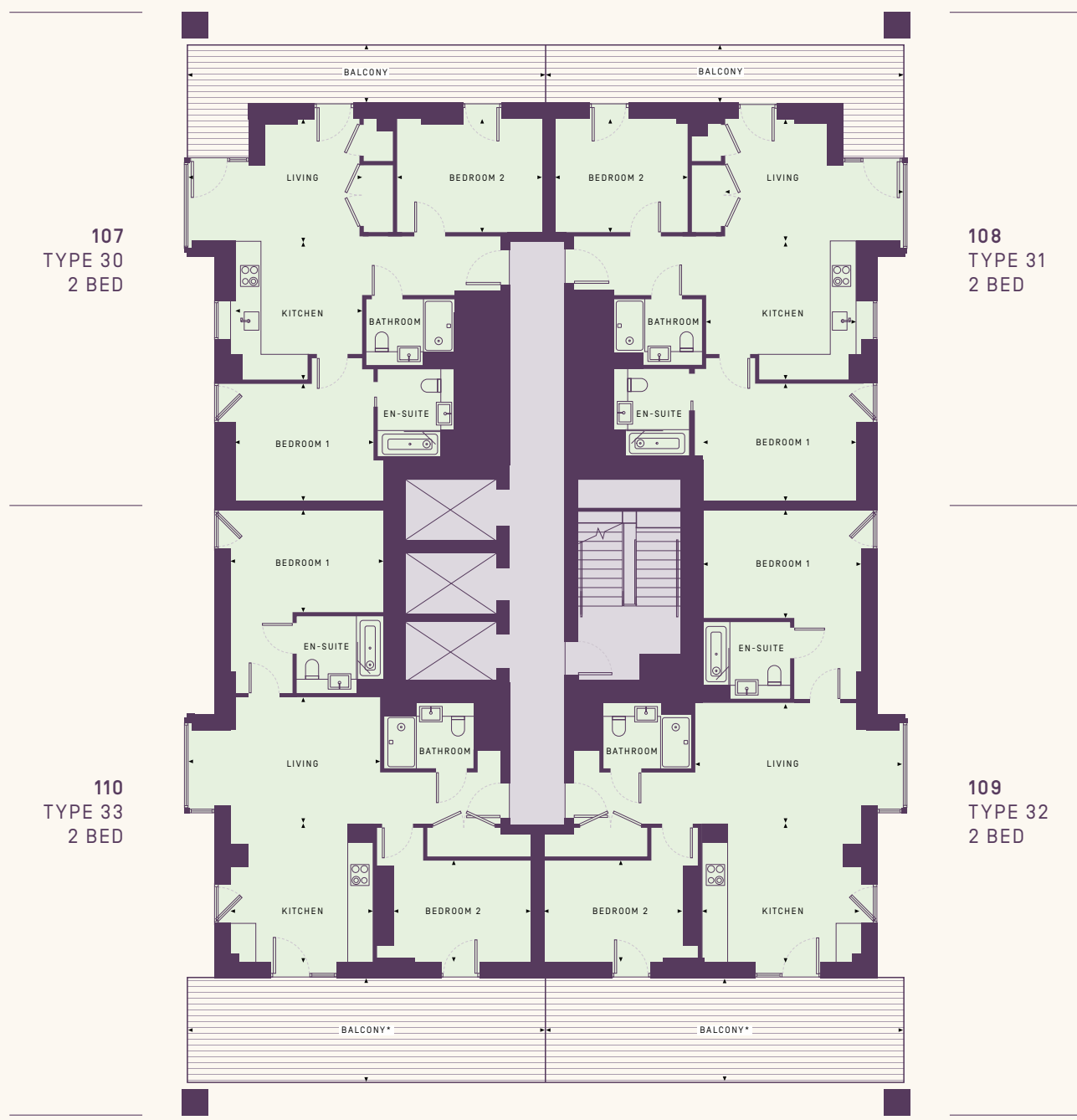
NIA	82.09 m ²	884 ft ²
LIVING	5.72 x 3.35 m	18' 9" x 11' 0"
KITCHEN	4.34 x 3.72 m	14' 3" x 12' 2"
BEDROOM 1	4.30 x 2.95 m	14' 1" x 9' 8"
BEDROOM 2	3.85 x 2.77 m	12' 8" x 9' 1"
BALCONY	9.70 x 2.80 m	31' 11" x 9' 3"

110 TYPE 33 2 BEDROOM

NIA	78.23 m ²	842 ft ²
LIVING	5.29 x 3.50 m	17' 4" x 11' 6"
KITCHEN	3.89 x 3.72 m	12' 9" x 12' 2"
BEDROOM 1	4.17 x 2.78 m	13' 8" x 9' 1"
BEDROOM 2	3.84 x 2.77 m	12' 7" x 9' 1"
BALCONY	9.70 x 2.80 m	31' 11" x 9' 3"

2 BEDROOM

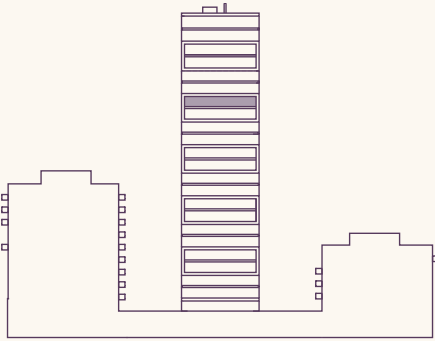
Floorplans are for approximate measurements only. Exact layouts and sizes may vary. All measurements may vary within a tolerance of 5%. The dimensions are not intended to be used for carpet sizes, appliances or items of furniture.



FLOORS 17

APARTMENTS
111-114

CODA : FLOORPLANS



111 TYPE 30 2 BEDROOM

NIA	71.06 m ²	765 ft ²
LIVING	4.74 x 3.19 m	15' 6" x 10' 6"
KITCHEN	3.46 x 3.79 m	11' 4" x 12' 5"
BEDROOM 1	3.77 x 3.20 m	12' 4" x 10' 6"
BEDROOM 2	3.96 x 3.09 m	13' 0" x 10' 2"
BALCONY	9.70 x 1.60 m	31' 11" x 5' 2"

108, 112 TYPE 31 2 BEDROOM

NIA	74.32 m ²	800 ft ²
LIVING	4.93 x 3.19 m	16' 2" x 10' 6"
KITCHEN	4.09 x 3.79 m	13' 5" x 12' 5"
BEDROOM 1	4.40 x 3.20 m	14' 5" x 10' 6"
BEDROOM 2	3.61 x 3.09 m	11' 10" x 10' 2"
BALCONY	9.70 x 1.60 m	31' 11" x 5' 2"

113 TYPE 32 2 BEDROOM

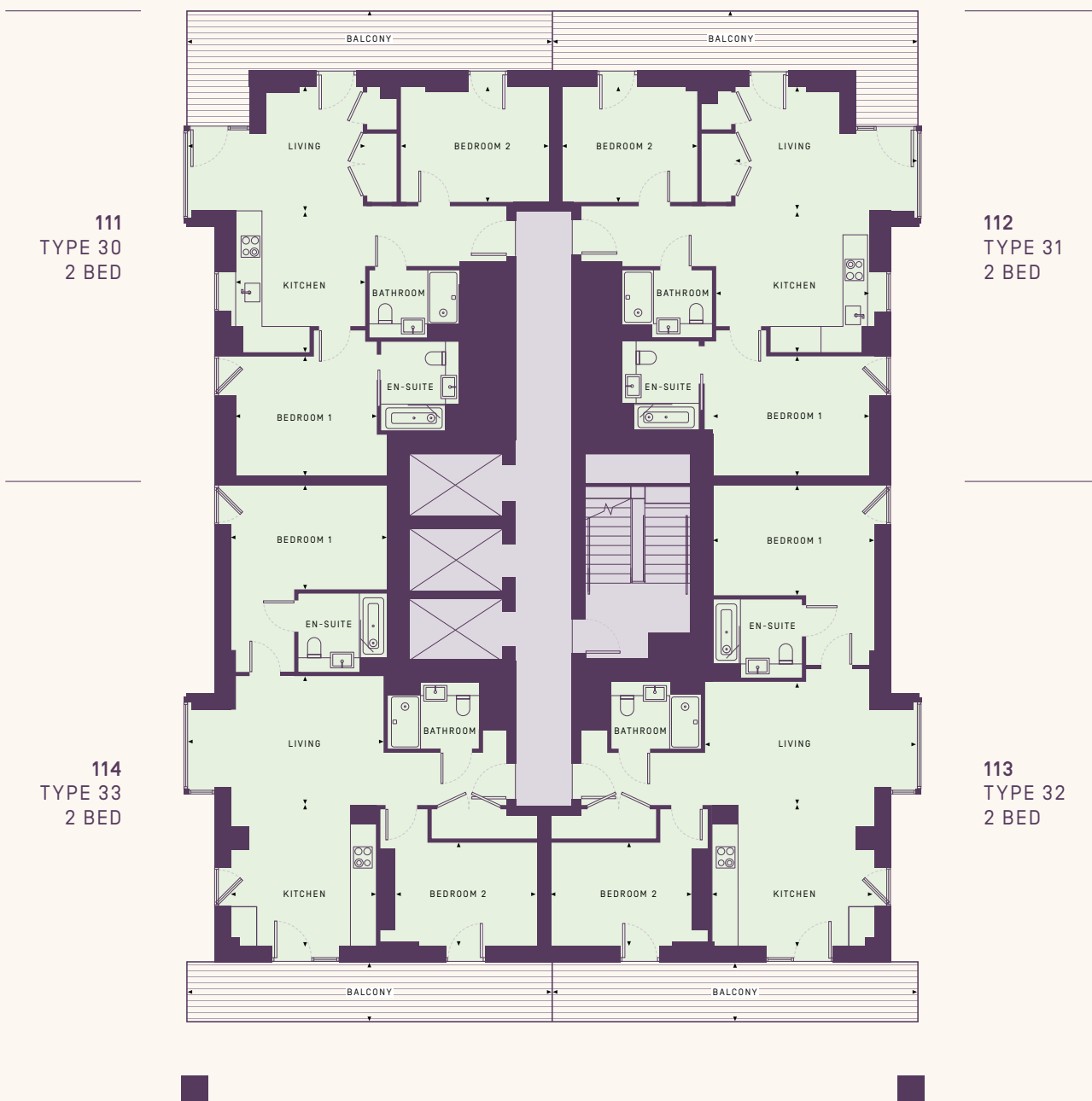
NIA	82.09 m ²	884 ft ²
LIVING	5.72 x 3.35 m	18' 9" x 11' 0"
KITCHEN	4.34 x 3.72 m	14' 3" x 12' 2"
BEDROOM 1	4.30 x 2.95 m	14' 1" x 9' 8"
BEDROOM 2	3.85 x 2.77 m	12' 8" x 9' 1"
BALCONY	9.70 x 1.60 m	31' 11" x 5' 2"

114 TYPE 33 2 BEDROOM

NIA	78.23 m ²	842 ft ²
LIVING	5.29 x 3.50 m	17' 4" x 11' 6"
KITCHEN	3.89 x 3.72 m	12' 9" x 12' 2"
BEDROOM 1	4.17 x 2.78 m	13' 8" x 9' 1"
BEDROOM 2	3.84 x 2.77 m	12' 7" x 9' 1"
BALCONY	9.70 x 1.60 m	31' 11" x 5' 2"

2 BEDROOM

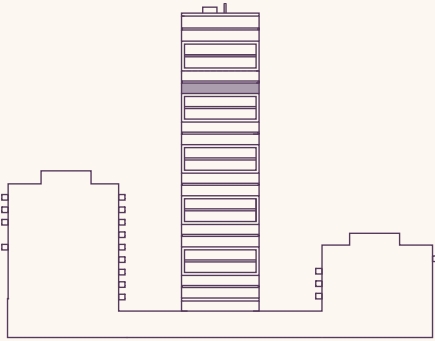
Floorplans are for approximate measurements only. Exact layouts and sizes may vary. All measurements may vary within a tolerance of 5%. The dimensions are not intended to be used for carpet sizes, appliances or items of furniture.



FLOORS 18

APARTMENTS
115-117

CODA : FLOORPLANS



115 TYPE 34 3 BEDROOM

NIA	91.81 m ²	988 ft ²
LIVING	5.11 x 3.58 m	16' 9" x 11' 9"
KITCHEN	4.60 x 3.19 m	15' 1" x 10' 6"
BEDROOM 1	4.17 x 3.38 m	13' 8" x 11' 1"
BEDROOM 2	3.79 x 3.09 m	12' 5" x 10' 2"
BEDROOM 3	2.74 x 3.40 m	9' 0" x 11' 2"
BALCONY	9.70 x 1.60 m	31' 11" x 5' 2"

116 TYPE 35 3 BEDROOM

NIA	98.80 m ²	1,064 ft ²
LIVING	5.51 x 3.58 m	18' 1" x 11' 9"
KITCHEN	4.69 x 3.19 m	15' 5" x 10' 6"
BEDROOM 1	4.30 x 3.38 m	14' 1" x 11' 1"
BEDROOM 2	3.55 x 3.09 m	11' 8" x 10' 2"
BEDROOM 3	2.90 x 3.40 m	9' 6" x 11' 2"
BALCONY	9.70 x 1.60 m	31' 11" x 5' 2"

117 TYPE 36 2 BEDROOM

NIA	86.32 m ²	929 ft ²
LIVING	6.62 x 2.01 m	21' 9" x 6' 7"
KITCHEN	4.32 x 2.80 m	14' 2" x 9' 2"
BEDROOM 1	3.35 x 3.68 m	11' 0" x 12' 6"
BEDROOM 2	3.85 x 4.81 m	12' 8" x 15' 9"
BALCONY	19.50 x 1.60 m	64' 0" x 5' 2"

- 2 BEDROOM
- 3 BEDROOM

Floorplans are for approximate measurements only. Exact layouts and sizes may vary. All measurements may vary within a tolerance of 5%. The dimensions are not intended to be used for carpet sizes, appliances or items of furniture.



115
TYPE 34
3 BED

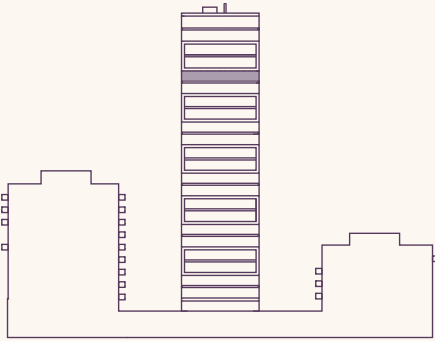
116
TYPE 35
3 BED

117
TYPE 36
2 BED

FLOORS 19

APARTMENTS
118-120

CODA : FLOORPLANS



118 TYPE 34 3 BEDROOM

NIA	91.81 m ²	988 ft ²
LIVING	5.11 x 3.58 m	16' 9" x 11' 9"
KITCHEN	4.60 x 3.19 m	15' 1" x 10' 6"
BEDROOM 1	4.17 x 3.38 m	13' 8" x 11' 1"
BEDROOM 2	3.79 x 3.09 m	12' 5" x 10' 2"
BEDROOM 3	2.74 x 3.40 m	9' 0" x 11' 2"
BALCONY	9.70 x 1.60 m	31' 11" x 5' 2"

119 TYPE 35 3 BEDROOM

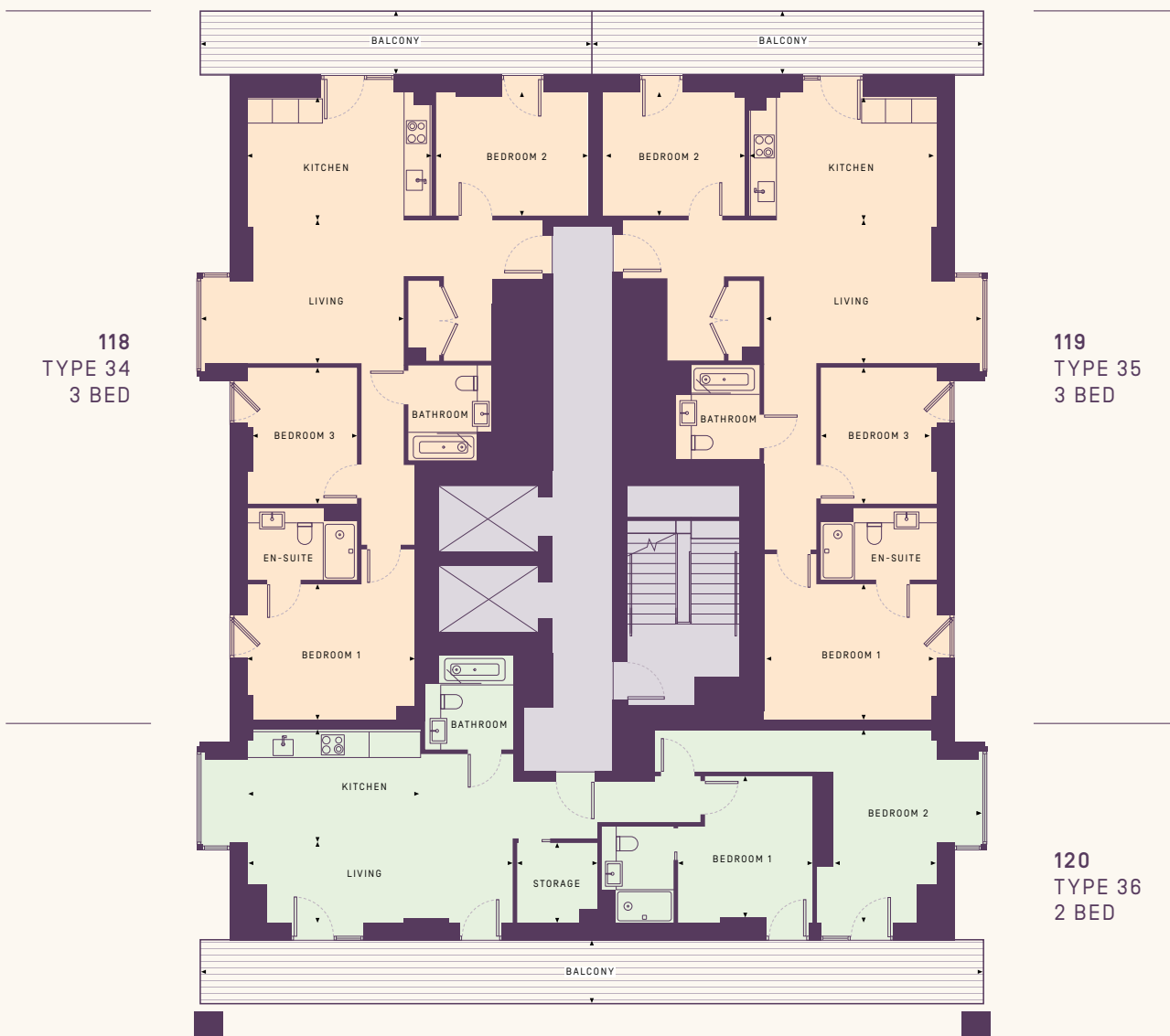
NIA	98.80 m ²	1,064 ft ²
LIVING	5.51 x 3.58 m	18' 1" x 11' 9"
KITCHEN	4.69 x 3.19 m	15' 5" x 10' 6"
BEDROOM 1	4.30 x 3.38 m	14' 1" x 11' 1"
BEDROOM 2	3.55 x 3.09 m	11' 8" x 10' 2"
BEDROOM 3	2.90 x 3.40 m	9' 6" x 11' 2"
BALCONY	9.70 x 1.60 m	31' 11" x 5' 2"

120 TYPE 36 2 BEDROOM

NIA	86.32 m ²	929 ft ²
LIVING	6.62 x 2.01 m	21' 9" x 6' 7"
KITCHEN	4.32 x 2.80 m	14' 2" x 9' 2"
BEDROOM 1	3.35 x 3.68 m	11' 0" x 12' 6"
BEDROOM 2	3.85 x 4.81 m	12' 8" x 15' 9"
BALCONY	19.50 x 1.60 m	64' 0" x 5' 2"

- 2 BEDROOM
- 3 BEDROOM

Floorplans are for approximate measurements only. Exact layouts and sizes may vary. All measurements may vary within a tolerance of 5%. The dimensions are not intended to be used for carpet sizes, appliances or items of furniture.



118
TYPE 34
3 BED

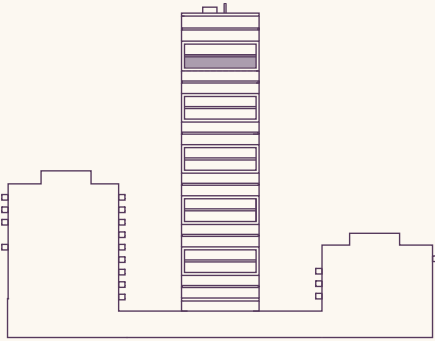
119
TYPE 35
3 BED

120
TYPE 36
2 BED

FLOORS 20

APARTMENTS
121-123

CODA : FLOORPLANS



121 TYPE 34 3 BEDROOM

NIA	91.81 m ²	988 ft ²
LIVING	5.11 x 3.58 m	16' 9" x 11' 9"
KITCHEN	4.60 x 3.19 m	15' 1" x 10' 6"
BEDROOM 1	4.17 x 3.38 m	13' 8" x 11' 1"
BEDROOM 2	3.79 x 3.09 m	12' 5" x 10' 2"
BEDROOM 3	2.74 x 3.40 m	9' 0" x 11' 2"
BALCONY	9.70 x 1.60 m	31' 11" x 5' 2"

122 TYPE 35 3 BEDROOM

NIA	98.80 m ²	1,064 ft ²
LIVING	5.51 x 3.58 m	18' 1" x 11' 9"
KITCHEN	4.69 x 3.19 m	15' 5" x 10' 6"
BEDROOM 1	4.30 x 3.38 m	14' 1" x 11' 1"
BEDROOM 2	3.55 x 3.09 m	11' 8" x 10' 2"
BEDROOM 3	2.90 x 3.40 m	9' 6" x 11' 2"
BALCONY	9.70 x 1.60 m	31' 11" x 5' 2"

123 TYPE 36 2 BEDROOM

NIA	86.32 m ²	929 ft ²
LIVING	6.62 x 2.01 m	21' 9" x 6' 7"
KITCHEN	4.32 x 2.80 m	14' 2" x 9' 2"
BEDROOM 1	3.35 x 3.68 m	11' 0" x 12' 6"
BEDROOM 2	3.85 x 4.81 m	12' 8" x 15' 9"
BALCONY	19.50 x 1.60 m	64' 0" x 5' 2"

- 2 BEDROOM
- 3 BEDROOM

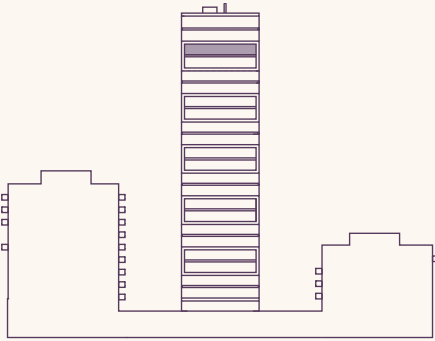
Floorplans are for approximate measurements only. Exact layouts and sizes may vary. All measurements may vary within a tolerance of 5%. The dimensions are not intended to be used for carpet sizes, appliances or items of furniture.



FLOORS 21

APARTMENTS
124-126

CODA : FLOORPLANS



124 TYPE 34 3 BEDROOM

NIA	91.81 m ²	988 ft ²
LIVING	5.11 x 3.58 m	16' 9" x 11' 9"
KITCHEN	4.60 x 3.19 m	15' 1" x 10' 6"
BEDROOM 1	4.17 x 3.38 m	13' 8" x 11' 1"
BEDROOM 2	3.79 x 3.09 m	12' 5" x 10' 2"
BEDROOM 3	2.74 x 3.40 m	9' 0" x 11' 2"
BALCONY	9.70 x 1.60 m	31' 11" x 5' 2"

125 TYPE 35 3 BEDROOM

NIA	98.80 m ²	1,064 ft ²
LIVING	5.51 x 3.58 m	18' 1" x 11' 9"
KITCHEN	4.69 x 3.19 m	15' 5" x 10' 6"
BEDROOM 1	4.30 x 3.38 m	14' 1" x 11' 1"
BEDROOM 2	3.55 x 3.09 m	11' 8" x 10' 2"
BEDROOM 3	2.90 x 3.40 m	9' 6" x 11' 2"
BALCONY	9.70 x 1.60 m	31' 11" x 5' 2"

126 TYPE 36 2 BEDROOM

NIA	86.32 m ²	929 ft ²
LIVING	6.62 x 2.01 m	21' 9" x 6' 7"
KITCHEN	4.32 x 2.80 m	14' 2" x 9' 2"
BEDROOM 1	3.35 x 3.68 m	11' 0" x 12' 6"
BEDROOM 2	3.85 x 4.81 m	12' 8" x 15' 9"
BALCONY	19.50 x 1.60 m	64' 0" x 5' 2"

- 2 BEDROOM
- 3 BEDROOM

Floorplans are for approximate measurements only. Exact layouts and sizes may vary. All measurements may vary within a tolerance of 5%. The dimensions are not intended to be used for carpet sizes, appliances or items of furniture.



124
TYPE 34
3 BED

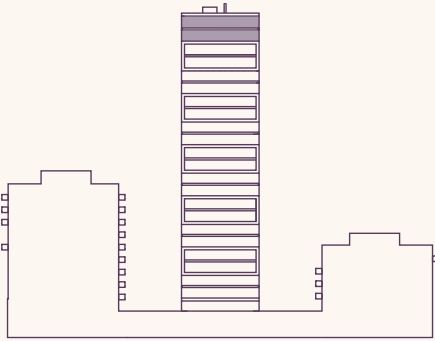
125
TYPE 35
3 BED

126
TYPE 36
2 BED

FLOORS 22

APARTMENTS
127-128

CODA : FLOORPLANS



127*

TYPE 37 3 BEDROOM

NIA	101.99 m ²	1,098 ft ²
LIVING	6.78 x 2.23 m	22' 3" x 7' 4"
KITCHEN	4.00 x 4.34 m	13' 1" x 14' 3"
BEDROOM 1	4.40 x 2.98 m	14' 5" x 9' 9"
BEDROOM 2	4.23 x 3.34 m	13' 11" x 10' 11"
BEDROOM 3	3.02 x 2.70 m	9' 11" x 8' 10"
BALCONY 1	9.70 x 1.80 m	31' 11" x 5' 9"
BALCONY 2	9.70 x 3.00 m	31' 11" x 9' 9"

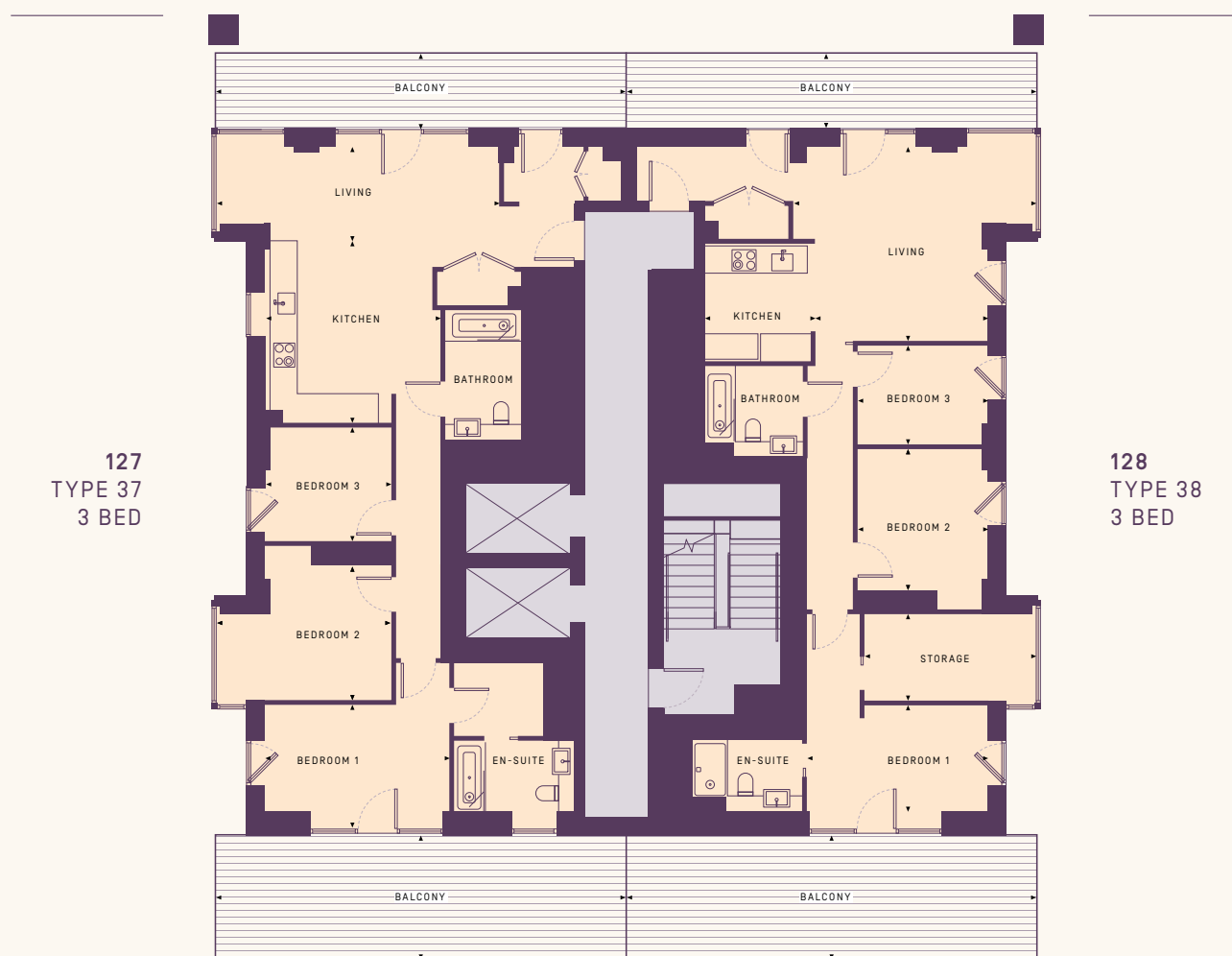
128

TYPE 38 3 BEDROOM

NIA	99.40 m ²	1,070 ft ²
LIVING	5.85 x 4.62 m	19' 2" x 15' 2"
KITCHEN	2.63 x 2.80 m	8' 8" x 9' 2"
BEDROOM 1	4.30 x 2.53 m	14' 1" x 8' 4"
BEDROOM 2	3.10 x 3.47 m	10' 2" x 11' 5"
BEDROOM 3	3.10 x 2.36 m	10' 2" x 7' 9"
STORAGE	4.14 x 2.06 m	13' 7" x 6' 9"
BALCONY 1	9.70 x 1.60 m	31' 11" x 5' 2"
BALCONY 2	9.70 x 3.00 m	31' 11" x 9' 9"

3 BEDROOM

Floorplans are for approximate measurements only. Exact layouts and sizes may vary. All measurements may vary within a tolerance of 5%. The dimensions are not intended to be used for carpet sizes, appliances or items of furniture.



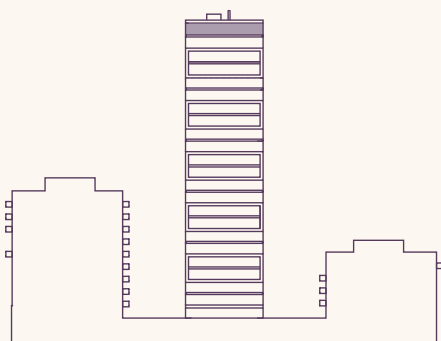
127
TYPE 37
3 BED

128
TYPE 38
3 BED

FLOORS 23

APARTMENTS
129-130

CODA : FLOORPLANS



129		
TYPE 37 3 BEDROOM		
NIA	101.99 m ²	1,098 ft ²
LIVING	6.78 x 2.23 m	22' 3" x 7' 4"
KITCHEN	4.00 x 4.34 m	13' 1" x 14' 3"
BEDROOM 1	4.40 x 2.98 m	14' 5" x 9' 9"
BEDROOM 2	4.23 x 3.34 m	13' 11" x 10' 11"
BEDROOM 3	3.02 x 2.70 m	9' 11" x 8' 10"
BALCONY 1	9.70 x 1.60 m	31' 11" x 5' 2"
BALCONY 2	9.70 x 1.60 m	31' 11" x 5' 2"

130		
TYPE 38 3 BEDROOM		
NIA	99.40 m ²	1,070 ft ²
LIVING	5.85 x 4.62 m	19' 2" x 15' 2"
KITCHEN	2.63 x 2.80 m	8' 8" x 9' 2"
BEDROOM 1	4.30 x 2.53 m	14' 1" x 8' 4"
BEDROOM 2	3.10 x 3.47 m	10' 2" x 11' 5"
BEDROOM 3	3.10 x 2.36 m	10' 2" x 7' 9"
STORAGE	4.14 x 2.06 m	13' 7" x 6' 9"
BALCONY 1	9.70 x 1.60 m	31' 11" x 5' 2"
BALCONY 2	9.70 x 1.60 m	31' 11" x 5' 2"

3 BEDROOM

Floorplans are for approximate measurements only. Exact layouts and sizes may vary. All measurements may vary within a tolerance of 5%. The dimensions are not intended to be used for carpet sizes, appliances or items of furniture.

